

New Jersey Conservation
FOUNDATION

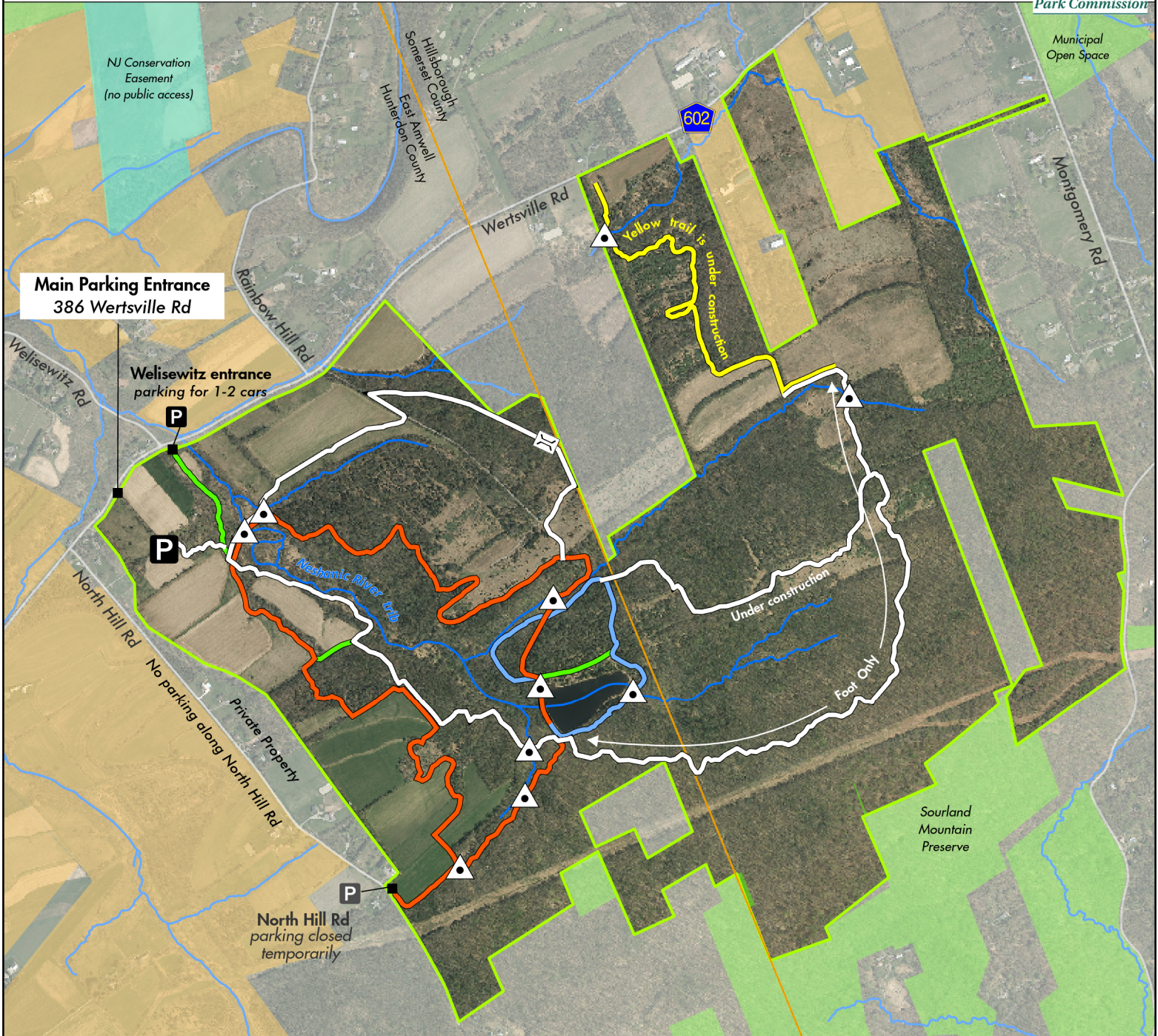
Rainbow Hill at Sourland Mountain Preserve

1,150 acres in Hillsborough & East Amwell, Somerset & Hunterdon Counties, New Jersey

A Somerset County & New Jersey Conservation Foundation Preserve
New Jersey Conservation Foundation: Bamboo Brook, 170 Longview Road, Far Hills, NJ 07931
1 (888) LANDSAVE (526-3728) • www.njconservation.org



Somerset County
Park Commission



Trails

- White Trail (3.75 miles) plus 0.75 miles under construction
- Red Trail (3.5 miles)
- Blue Trail (1 mile)
- Yellow Trail (1 mile) currently under construction
- Green Connector Trails
- Rock-hop stream crossing
- Foot Bridge
- River/Stream
- Parking

- Preserve Boundary
- Other NJ Conservation Owned/Managed Land
- Other Preserved Open Space
- Other Preserved Farmland
- Road
- County/Municipal Boundary

0 1,450 2,900 4,350 Feet



4/3/2024

While great care is taken to present the most up to date information, NJ Conservation Foundation does not assume responsibility for spatial accuracy or timeliness of underlying data. This map is not a survey and should be used for planning purposes only. NJ Conservation Foundation expressly disclaims any and all responsibility for errors, omission or other inconsistencies depicted, arising from or otherwise related to this map product.