



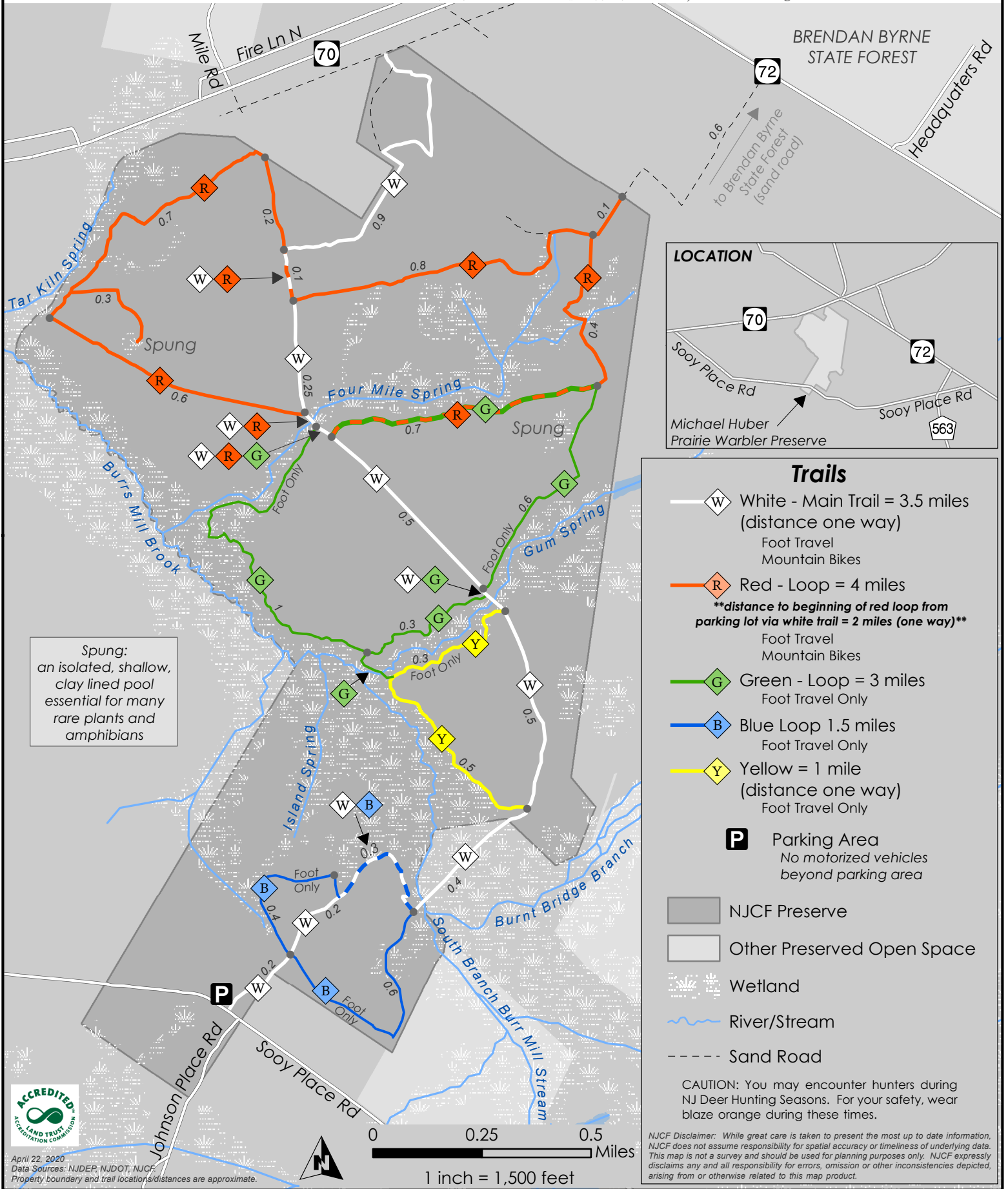
**New Jersey Conservation
FOUNDATION**

Michael Huber Prairie Warbler Preserve

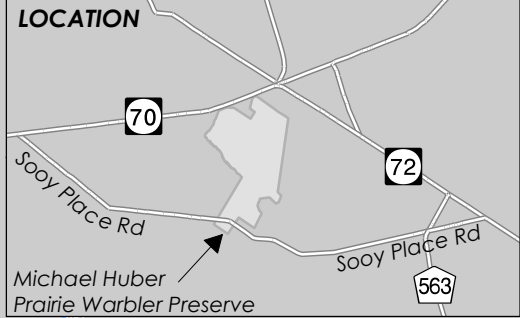
1,227 Acres in Woodland Township, Burlington County, New Jersey

A New Jersey Conservation Foundation Preserve • Bamboo Brook, 170 Longview Road, Far Hills, NJ 07931

1 (888) LANDSAVE (526-3728) • www.njconservation.org



Spung:
an isolated, shallow,
clay lined pool
essential for many
rare plants and
amphibians



- ### Trails
- White - Main Trail = 3.5 miles (distance one way)
Foot Travel
Mountain Bikes
 - Red - Loop = 4 miles
****distance to beginning of red loop from parking lot via white trail = 2 miles (one way)****
Foot Travel
Mountain Bikes
 - Green - Loop = 3 miles
Foot Travel Only
 - Blue Loop 1.5 miles
Foot Travel Only
 - Yellow = 1 mile (distance one way)
Foot Travel Only
 - P** Parking Area
No motorized vehicles beyond parking area

- NJCF Preserve
- Other Preserved Open Space
- Wetland
- River/Stream
- Sand Road

CAUTION: You may encounter hunters during NJ Deer Hunting Seasons. For your safety, wear blaze orange during these times.

NJCF Disclaimer: While great care is taken to present the most up to date information, NJCF does not assume responsibility for spatial accuracy or timeliness of underlying data. This map is not a survey and should be used for planning purposes only. NJCF expressly disclaims any and all responsibility for errors, omission or other inconsistencies depicted, arising from or otherwise related to this map product.



April 22, 2020
Data Sources: NJDEP, NJDOT, NJCF
Property boundary and trail location/distances are approximate.

1 inch = 1,500 feet