

The background of the cover is a photograph of a lush green field with white wildflowers in the foreground. In the middle ground, there is a dense line of green trees. The sky is bright blue with scattered white clouds. The top of the cover has a solid green header.

NEW JERSEY CONSERVATION

Saving Land

A Directory of Land Conservation
Organizations in New Jersey

2017



New Jersey Conservation

F O U N D A T I O N



Saving Land

A Directory of Land Conservation
Organizations in New Jersey

August 2017

Compiled by
New Jersey Conservation Foundation

And updated by the following Volunteers:

Anne Gaus

Ashvin Kumar

Visit www.njconservation.org to view the directory online.

Celebrate Saving Land!

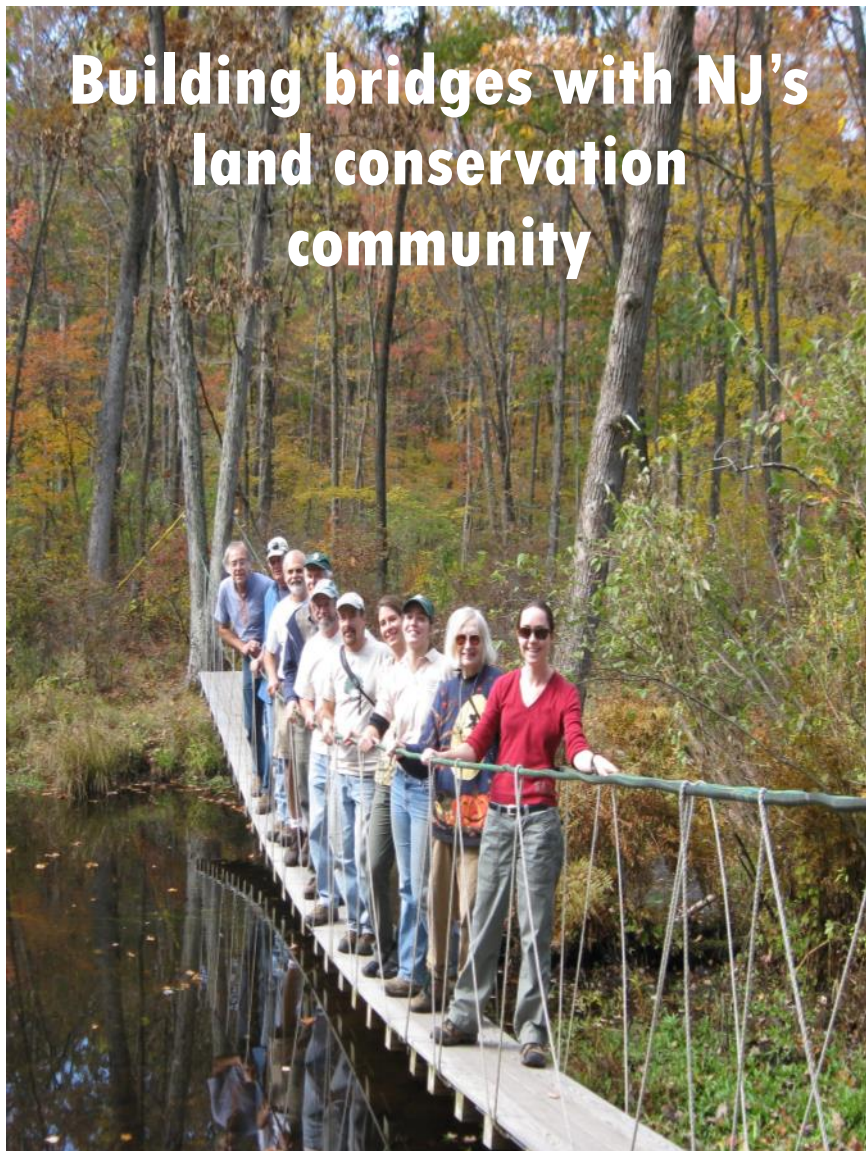
Thank you to the 108 nonprofit conservation organizations working to preserve New Jersey's natural, cultural, recreational and agricultural lands. Together, with state agencies and local governments, a total of 1.4 million acres (29%) of New Jersey's lands are preserved. These lands protect drinking water supplies, provide local healthy foods, encourage a healthy citizenry, and ensure a diversity of habitats for current and future generations.

We are inspired by the work of our state's nonprofit conservation partners, and are happy to say that New Jersey Conservation Foundation has partnered with over three-fourths of the organizations featured in the "Saving Land" directory. We will continue to embrace our conservation assistance role—Land Trust Network, annual land conservation conference, and Franklin Parker Conservation Excellence grants—to maintain the strength of our conservation community. We have about one million acres yet to preserve. Let's get to work—together!

A handwritten signature in black ink, reading "Michele S. Byers". The signature is fluid and cursive, with a long horizontal stroke at the end.

Michele S. Byers
Executive Director
New Jersey Conservation Foundation

Building bridges with NJ's land conservation community



About The Directory

The directory will promote communication and partnerships among groups within the conservation community. People who want to join others to take care of natural areas as well as landowners who want to preserve their land will find the booklet a handy resource.

“Saving Land” was first published in 2010 and is updated annually. In 2010 a total of 91 nonprofit organizations were listed. The 2017 edition of “Saving Land” lists 108 nonprofit organizations dedicated to preserving and stewarding land in New Jersey.

The groups are as varied as New Jersey’s environment. Some operate with all volunteers; others are professionally staffed. Some groups work in one municipality, region or watershed; others work statewide, nationally and internationally. Some groups only acquire land; others only steward or manage land. Some groups assist public agencies in managing parklands; others protect special habitats. Some serve as advocates; still others do it all.

Each organization in the directory is described briefly, including a mission statement, geographic focus area, and land owned or managed. To learn more, contact information is provided for every group.

The directory is accessible online through New Jersey Conservation Foundation’s website (www.njconservation.org). The volunteers who compiled the booklet used wording directly from the website of each organization. However, directory information changes rapidly. We welcome corrections, additions and comments. Please send any changes to Laura@njconservation.org.

Celebrate the land savers of New Jersey!

Alliance for a Living Ocean	1
American Littoral Society	2
Association of NJ Environmental Commissions	3
Barnegat Bay Partnership.....	4
Becker Park Conservancy	5
Bergen Save the Watershed Action Network (SWAN)..	6
Branch Brook Park Alliance.....	7
Brookdale Park Conservancy	8
Camden Greenways Inc.	9
Canal Society of New Jersey	10
Citizens Right to Access Beaches (C.R.A.B.).....	11
Citizens United to Protect the Maurice River	12
Clean Ocean Action	13
Coalition to Preserve the Palisades Cliffs	14
Conserve Wildlife Foundation of New Jersey	15
Coopers Ferry Partnership.....	16
D&R Greenway Land Trust	17
Delaware River Greenway Partnership	18
Eagle Rock Reservation Conservancy	19
Edison Greenways Group	20
Edison Wetlands Association	21
Elizabeth River/Arthur Kill Watershed Association ...	22
Embankment Preservation Coalition	23
Fairview Lake & Watershed Conservation Foundation	24
Flat Rock Brook Nature Center	25
Foodshed Alliance	26
Forked River Mountain Coalition	27
Friends of Holmdel Open Space	28
Friends of Hopewell Valley Open Space	29
Friends of Island Beach State Park	30
Friends of Princeton Open Space	31
Friends of West Windsor Open Space	32
Fund for a Better Waterfront	33
Fund for Roosevelt Inc.	34
Future City Inc.	35
Fyke Nature Association	36
Great Egg Harbor Watershed Association	37
Great Swamp Watershed Association (GSWA)	38
Greater Newark Conservancy	39

GreenFaith.....	40
Grover Cleveland Park Conservancy	41
Hackensack Riverkeeper Inc.	42
Harding Land Trust	43
Hudson River Waterfront Conservancy	44
Hunterdon Land Trust.....	45
Ironbound Community Corporation (ICC).....	46
Isles Inc.....	47
Jacques Cousteau National Estuarine Research	48
KEEP Conservation Foundation	49
Kingston Greenway Association.....	50
Lake Hopatcong Foundation.....	51
Lamington Conservancy.....	52
Lawrence Brook Watershed Partnership	53
Lawrence Township Conservation Foundation.....	54
Meadowlands Conservation Trust	55
Medicine Waters Conservancy	56
Monmouth Conservation Foundation.....	57
Montgomery Friends of Open Space	58
Musconetcong Mountain Conservancy	59
Musconetcong Watershed Association	60
National Biodiversity Parks Inc.	61
Natural Lands Trust (NJ).....	62
Natural Lands Trust (PA).....	63
Natural Resource Education Foundation	64
Nature Preservation Council, Inc.....	65
New Jersey Agricultural Land Trust.....	66
New Jersey Audubon Society.....	67
New Jersey Conservation Foundation.....	68
New Jersey Highlands Coalition	69
New Jersey Invasive Species Strike Team	70
New Jersey Tree Foundation.....	71
NY/NJ Baykeeper	72
New York-New Jersey Trail Conference	73
Old Pine Farm Natural Lands Trust	74
Open Space Institute.....	75
Palisades Interstate Park Commission	76
Passaic River Coalition.....	77

Pequannock River Coalition	78
Phillipsburg Riverview Organization	79
Pinelands Preservation Alliance	80
Pompeston Creek Watershed Association	81
POWWW, Protect our Wetlands, Water & Woods	82
Rahway River Association.....	83
Rancocas Conservancy	84
Raritan Headwaters Association	85
Ridge and Valley Conservancy	86
Saddler's Woods Conservation Association	87
Save Barnegat Bay	88
Save the Environment of Moorestown (STEM)	89
Schiff Natural Lands Trust.....	90
Sourland Conservancy.....	91
South Jersey Land & Water Trust	92
South Mountain Conservancy.....	93
SPARK Friends of Riverbank Park.....	94
Stony Brook-Millstone Watershed Association	95
Teaneck Creek Conservancy	96
Tewksbury Land Trust.....	97
The Land Conservancy of New Jersey	98
The Nature Conservancy (NJ Office).....	99
Trust for Public Land (NJ Office).....	100
Unexpected Wildlife Refuge	101
Verona Park Conservancy.....	102
Washington Township Land Trust	103
Watsessing Park Conservancy	104
Weequahic Park Association	105
West Essex Park Conservancy.....	106
Whale Pond Brook Watershed Association	107
Whitesbog Preservation Trust.....	108

Alliance for a Living Ocean

The Alliance for a Living Ocean was formed in 1987, at a time when the New Jersey shore was particularly threatened by severe pollution. The group seeks to protect and maintain clean water and a healthy coastal environment, and does this by taking legislative action, initiating local activities and individual responsibilities, and promoting education programs.

ALO is based in Ship Bottom, NJ, and has 1 full time staff member as well as many dedicated volunteers. The group and its members have been recognized with a number of awards and honors for their work.

ALO hosts many different events and programs to involve and educate the public.



Contact Information

Kyle Gronostajski, Executive Director

Mailing Address

PO Box 2250
Long Beach, NJ 08008

Email Address

livingoceanALO@gmail.com

Phone Number

609-494-7800

Website

www.livingocean.org

American Littoral Society



AMERICAN LITTORAL SOCIETY
Caring for the Coast

The American Littoral Society (ALS) is a non-profit organization founded in 1961. The Society has 5,000 members and 13 paid staff.

The mission of the American Littoral Society is to promote the study and conservation of marine life and habitat, protect the coast from harm, and empower others to do the same.

The American Littoral Society's geographic focus is the east coast of the United States, with activities in the Northeast, Mid-Atlantic, and Southeast regions.

ALS does not own property or hold easements, however it does work in partnership to protect critical coastal open space.



As “stewards of the coast,” the ALS engages in many restoration projects.

Contact Information

Tim Dillingham, Executive Director

Mailing Address

18 Hartshorne Drive
Suite #1
Highlands, NJ 07732

Email Address

info@littoralsociety.org

Phone Number

(732) 291-0055

Website

www.littoralsociety.org

Association of NJ Environmental Commissions



The Association of New Jersey Environmental Commissions is a non-profit educational organization founded in 1969. It has 12 paid staff and 2,500 members.

The mission of ANJEC is to promote the public interest in natural resource protection, sustainable development and reclamation and to support local environmental commissions, open space committees, and green teams working with citizens and other non-profit organizations.

ANJEC focuses on the entire state of New Jersey; it does not own property or hold easements.

ANJEC lending a hand to “help protect health and the environment in NJ’s urban and developed communities.”



Contact Information

Jennifer Coffey, Executive Director

Mailing Address

P.O. Box 157
Mendham, NJ 07945

Email Address

info@anjec.org

Phone Number

(973) 539-7547

Website

<http://www.anjec.org/>

Barnegat Bay Partnership

Founded in 1995, the Barnegat Bay Partnership (BBP) is one of 28 Congressionally designated National Estuary Programs throughout the United States and is funded by the United States Environmental Protection Agency's National Estuary Program. The Program was created in response to the Clean Water Act (Section 320) which directs the EPA to develop plans for attaining or maintaining water quality in an estuary.

The BBP is a partnership of federal, state, municipal, academic, business, and private organizations that work together with the communities of the Barnegat Bay watershed to help restore, protect, and enhance the natural resources of the Barnegat Bay ecosystem. The BBP prioritizes community outreach and engagement and nurtures sustainability in both community and natural resources.



Contact Information

L. Stanton Hales, Jr. Ph.D., Program Director

Mailing Address

P.O. Box 2001
Toms River, NJ 08754

Email Address

shales@ocean.edu

Phone Number

(732) 255-0472

Website

www.bbp.ocean.edu

Becker Park Conservancy

Becker Park is a 147-acre park owned by Essex County, and located in Roseland and Livingston Townships. Once a dairy farm, the property now consists of a mix of open fields and successional vegetation. The Becker Park Conservancy promotes and encourages the wise use and appreciation of the natural resources and historic properties in Becker Park. A small gauge railroad, the Centerville and Southwestern, delighted children and adults from 1940 to 1972. Most of the railroad was moved to the Phillipsburg Railroad Historians Museum in Phillipsburg, NJ where it can be seen today.



Contact Information

Russell Ferrara, Principle Officer

Mailing Address

18 Spalding Drive
Livingston, NJ 07039

Email Address

See website

Phone Number

See website

Website

www.beckerparkconservancy.org

Bergen SWAN

Bergen Save the Watershed Action Network (SWAN) is a non-profit organization founded in 1988. The Network is a volunteer-based organization with no paid staff or members.

The mission of Bergen SWAN is to preserve the natural lands surrounding drinking water supply reservoirs and promote the goals of watershed-based land use planning and management through public education and outreach.

The Network's geographic focus is the Upper Hackensack River Watershed, located in Bergen and Rockland counties.

The organization neither owns land nor holds conservation easements.



Volunteers help install a kiosk in Emerson, New Jersey.



Contact Information

Lori Charkey, Director

Mailing Address

P.O. Box 217
Westwood, NJ 07675

Email Address

bergenswan@sprynet.com

Phone Number

(201) 666-1877

Website

www.bergenswan.org

Branch Brook Park Alliance

Branch Brook Park Alliance (BBPA) and the Essex County Department of Parks, Recreation & Cultural Affairs are partners in improving this oldest of Essex County's parks, Branch Brook Park, the crown jewel of the first county parks system in the nation.

The mission of the Branch Brook Park Alliance is to accomplish objectives essential to the restoration and revitalization of Essex County Branch Brook Park, conceived by Frederick Law Olmsted Sr. in 1867 and designed by the Olmsted Firm. The Alliance, in partnership with the Essex County Department of Parks, Recreation and Cultural Affairs, also provides community-based programs and outreach initiatives.



Contact Information

Maureen Stapleton, Executive Assistant

Mailing Address

115 Clifton Avenue
Newark, NJ 07104

Email Address

mail@branchbrookpark.org

Phone Number

(973) 268-3500

Website

www.branchbrookpark.org

Brookdale Park Conservancy



**BROOKDALE
PARK**
CONSERVANCY

The Brookdale Park Conservancy is a volunteer run, nonprofit organization dedicated to the maintenance and enhancement of Brookdale Park in Essex County, NJ.

Brookdale Park, designed in 1928-1930 by the world renowned Olmsted Brothers Firm, is the fourth largest park in the historic Essex County Park System (est. 1895 as the first county park system in the US). With 78 acres in Bloomfield and 43 acres in Montclair, Brookdale is a serene oasis in an otherwise densely populated area.

Brookdale Park offers the public access to trails for walking and running, lush groves and extensive lawns, sports fields, track facilities, tennis courts, an archery range, a playground and stadium with grandstand.

One of the park's most notable attractions is the Essex County Rose Garden (established 1959) which features more than 100 species of roses.



Contact Information

Mollie Smith, Chairperson

Mailing Address

PO BOX 1148
Montclair, NJ 07042

Email Address

See website

Phone Number

(973) 268-3500

Website

<http://brookdalepark.org/>

Camden Greenways Inc.

Camden Greenways Inc. began in 1993 as the Camden Greenways Working Group and incorporated as a non-profit entity in 2000. It is a volunteer-based organization with no paid staff.

The mission of Camden Greenways Inc. is to implement a comprehensive Greenways Plan that details an extensive linear park system along the Delaware River, Cooper River, and Newton Creek in Camden, New Jersey.

The organization protects and preserves the greenways but does not own property or hold easements.



Camden Greenways Inc. is hoping to establish a “continuous multi-purpose trail” to connect green spaces.

Contact Information

Jack Sworaski, Chairman

Mailing Address

433 Market St.
Camden, NJ 08102

Email Address

info@camdengreenways.org

Phone Number

(856) 964-7336

Website

www.camdengreenways.org

Canal Society of New Jersey

The Canal Society (CSNJ) of New Jersey is a non-profit organization chartered in 1969 with a volunteer staff and 1,200 members.

The organization's mission is to foster the study of New Jersey's historic canals, preserve and restore canal remains and artifacts, and educate the public. The Canal Society runs canal tours, presents educational workshops, and maintains the Canal Museum in Stanhope, Sussex County. CSNJ is working to preserve the Morris Canal Greenway, a series of parks and trails along the historic Morris Canal corridor.

CSNJ does not own any properties or hold conservation easements.



A CSNJ member educates the public at its annual Waterloo Canal Day.

Contact Information

Joseph Macasek, President

Mailing Address

P.O. Box 737
Morristown, NJ 07963

Email Address

nj-cnal@googlegroups.com

Phone Number

(973) 292 2755

Website

www.canalsocietynj.org

Citizens Right to Access Beaches (C.R.A.B)

Citizens Right to Access Beaches (C.R.A.B.) Inc. is a non-political, non-profit organization made up of volunteers concerned that our beaches, a natural resource, are becoming inaccessible to the public. Registered in 1996, C.R.A.B. has no paid staff.

C.R.A.B.'s mission is to preserve public beach access, promote proper stewardship and educate the public on its rights and responsibilities regarding public beach access.

The focus of C.R.A.B. is being able to retain reasonable access to beaches in New Jersey.

C.R.A.B. does not own or acquire land or conservation easements.



C.R.A.B.
Citizens' Right to Access Beaches

732-361-CRAB (2722) • www.crabnl.org

P.O. Box 1064 • Point Pleasant Beach, NJ 08742



Monofilament recycle program
sponsored by C.R.A.B.

Contact Information

Ralph Cosica, President

Mailing Address

P. O Box 1064
Point Pleasant Beach, NJ 08742

Email Address

crabnj@yahoo.com

Phone Number

(732) 361-2722

Website

www.crabnj.com

Citizens United to Protect the Maurice River

Citizens United is a volunteer, non-profit corporation dedicated to the preservation and protection of the Maurice River watershed for the enjoyment of this and future generations. Founded in 1979 by local residents and incorporated as a charitable organization in 1986, CU now numbers over 430 memberships.

The diversity of the Citizens United membership affords CU the opportunity to work in close contact with other environmental organizations, sharing each other's knowledge and expertise. CU participates in many local, state and national cooperative conservation programs and serve on numerous advisory and policy-making boards. Members are also involved in keeping land trusts updated on possible land acquisition projects.

Citizens United involves groups and individuals in hands on habitat and conservation projects, seen here building an osprey nest platform.



© Marcia Walton

Contact Information

Jane Morton Galetto, President

Mailing Address

P. O Box 474
Millville, NJ 08332

Email Address

forrivers@comcast.net

Phone Number

(856) 300-5331

Website

www.cumauriceriver.org

Clean Ocean Action

Clean Ocean Action is a leading national and regional voice working “to improve the degraded water quality of the marine waters off the New Jersey/New York coast.” COA is a broad-based coalition of 125 active boating, business, community, conservation, diving, environmental, fishing, religious, service, student, surfing, and women’s groups. They have successfully engaged in programs to reduce water pollution and educate and engage citizens in protecting local waterways. COA’s staff researches pollution issues affecting the marine environment, then formulates policy and campaigns to eliminate each pollution source.



Contact Information

Cindy Zipf, Executive Director

Mailing Address

18 Hartshorne Drive, Suite 2
Highlands, NJ 07732

Email Address

See website

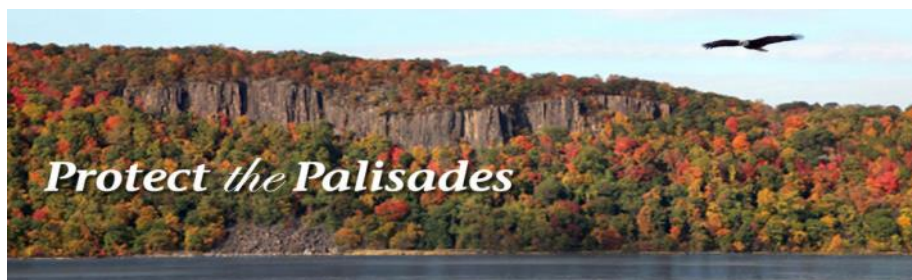
Phone Number

(732) 872-0111

Website

<http://www.cleanoceanaction.org>

Coalition to Preserve the Palisades Cliffs



This group has no paid staff, but rather is a coalition of individuals and organizations dedicated to protecting the Hudson River Palisades. The group seeks to educate the public about threats to the Palisades' scenic integrity, and engages in targeted grassroots action campaigns to safeguard the area from development threats. This coalition has worked alongside groups such as Natural Resources Defense Council and New Jersey Conservation Foundation.

A victory for the coalition was negotiating with the company LG to build a sustainable, low-impact facility in the Palisades.



Contact Information

Mailing Address

None

Email Address

protectthepalisades@gmail.com

Phone Number

None

Website

www.protectthepalisades.org

Conserve Wildlife Foundation of New Jersey



Conserve Wildlife Foundation (CWF) of New Jersey is a statewide non-profit organization dedicated to New Jersey's rare wildlife.

CWF works to protect and recover rare wildlife in New Jersey by conserving and restoring habitats, researching species, educating residents and engaging the public to protect the wildlife living on their doorstep. CWF works throughout the state of New Jersey.

CWF does not buy or own land or easements.

The American bald eagle, once on the brink of extinction, has had a remarkable recovery in New Jersey.



Contact Information

David Wheeler, Executive Director

Mailing Address

P. O Box 420
Trenton , NJ 08625

Email Address

info@conservewildlifenj.org

Phone Number

(609) 984-6012

Website

www.conservewildlifenj.org

Coopers Ferry Partnership



Cooper's Ferry Partnership (CFP) is committed to leveraging crucial economic development, using strategic planning to lay the groundwork for major redevelopment projects & initiatives in a revitalized Camden. CFP uses these projects to forward its mission of improving the City of Camden as a place to live, work, visit, and invest.

CFP works towards its mission through a wide range of activities including development of major Waterfront attractions, design and planning of municipal infrastructure, implementing improved streetscapes and roadways, and improved marketing to attract new businesses and support local business growth. CFP is working to cultivate vibrancy and a strong sense of place through physical upgrades and programming to attract new people, investors, and businesses.

Contact Information

Donald A. Borden, President

Mailing Address

One Port Center
2 Riverside Drive, Suite 501
Camden, New Jersey 08103

Email Address

See website

Phone Number

(856) 757-9154

Website

<http://coopersferry.com>

D&R Greenway Land Trust



D&R Greenway Land Trust's mission is to permanently preserve a network of natural lands, farm lands, and open spaces throughout central New Jersey and to lend

their expertise to advance land preservation in other parts of the State. As of 2009, D&R Greenway has led the preservation of over 22 square miles of land, an area about the size of Manhattan.

The organization acts as a continuing steward for 100 preserves and conservation easements. D&R Greenway creates public access trails that encourage people to connect with the land.

The *Johnson Education Center*, D&R Greenway's headquarters, has become a focal point for conservation activity in New Jersey. Programs presented throughout the year range from professional workshops to lectures on conservation issues by academics and environmental leaders.

St. Michael's in Hopewell is a major preservation project for D&R.



Contact Information

Linda Mead, Executive Director

Mailing Address

1 Preservation Place
Princeton, NJ 08540

Email Address

info@drgreenway.org

Phone Number

(609) 924-4646

Website

www.drgreenway.org

Delaware River Greenway Partnership

Delaware River Greenway Partnership (DRGP) is a non-profit organization founded in 1998.

The mission of DRGP is to engage with public and private partners to promote stewardship of the Wild and Scenic Lower Delaware River and its tributaries and to foster a shared sense of place among communities that adjoin the river by preserving and enhancing its ecological, scenic, historic, cultural and recreational resources.

The geographic focus of this organization is the region from the Delaware Water Gap through the upper estuary of the river.

DRGP does not own land or hold conservation easements.



Tinicum Creek is one of the creeks designated as part of the Lower Delaware.



Contact Information

Mark Zakutansky, President

Mailing Address

P.O. Box 15
Stockton, NJ 08559

Email Address

info@delawarivergreenway.org

Phone Number

none

Website

www.delrivgreenway.org

Eagle Rock Reservation Conservancy

The Eagle Rock Reservation Conservancy (ERRC) is a non-profit organization established in 2004 and operates solely through the efforts of volunteers.

The goal of the ERRC is to maintain and protect, preserve and restore the 408-acre Eagle Rock Reservation through fundraising, trail maintenance, and public awareness.

The geographic focus of the Conservancy is the Reservation located on the border between West Orange and Montclair, Essex County, New Jersey.

The organization does not own any land or hold easements.



A volunteer works to maintain the trails in Eagle Rock Reservation. ERRC volunteers clear fallen trees, divert standing water and other trail improvement activities.

Contact Information

James Christiano, President

Mailing Address

P.O. Box 235
West Orange, NJ 07052

Email Address

errc11@aol.com

Phone Number

(732) 382-7368

Website

www.eaglerockreservation.org

Edison Greenways Group

Edison Greenways Group (EGG), Inc. is a non-profit volunteer organization founded in 1991 and incorporated in 1992.

The organization's mission is to work with township, county, state, and federal organizations to raise awareness about open space preservation, environmental, and bicycle and pedestrian issues.

The geographic focus of Edison Greenways Group is Middlesex County, New Jersey.

The organization does not own properties or hold conservation easements.



EGG, a member of the Middlesex Greenway Coalition, helped secure an overpass over a highway to extend a greenway.



Contact Information

Robert Takash, President

Mailing Address

P.O. Box 10432
New Brunswick, NJ 08906

Email Address

info@edisongreenways.org

Phone Number

(732) 985-7071

Website

www.edisongreenways.org

Edison Wetlands Association

The Edison Wetlands Association (EWA) is a non-profit organization founded in 1989 to clean up toxic sites, preserve nature areas, fight for environmental justice, ensure balanced redevelopment, and provide environmental education for New Jersey families.

EWA currently works on seventy toxic sites across New Jersey, with a focus on central New Jersey.

The EWA owns the Triple C Ranch and Nature Center, the last remaining farm in northern Middlesex County located in the heart of the Dismal Swamp Conservation Area. EWA has been successful in preserving much of the 1,240-acre Dismal Swamp, a federal priority wetland.



EWA offers environmental educational experiences.



Contact Information

Robert Spiegel, Executive Director

Mailing Address

206 Tyler Road
Edison, NJ 08820

Email Address

ewainfo@edisonwetlands.org

Phone Number

(732) 321-1300

Website

www.edisonwetlands.org

Elizabeth River/Arthur Kill Watershed Association

The Elizabeth River/Arthur Kill Watershed Association is a non-profit organization founded in 1997, and is a subsidiary of Future City, Inc. It operates through the efforts of volunteers and 3 staff members.

The mission of the Association is to enhance the quality of life in and around the watershed for all of its natural and human residents by promoting the thorough investigation, impartial evaluation and effective removal of threats to the watershed. The Association accomplishes these goals through independent research, monitoring, public education and cooperation with state, federal and municipal authorities.

Its geographic focus is the Elizabeth River and Arthur Kill Watershed, located in Union County of northeastern New Jersey.

The organization does not own property or hold conservation easements.



View of the Arthur Kill

Contact Information

Michelle Doran McBean, Executive Director

Mailing Address

1045 East Jersey Street
Suite 204
Elizabeth, NJ 07201

Email Address

erakwatershed@optonline.net

Phone Number

(908) 787-0802

Website

none

Embankment Preservation Coalition

The Pennsylvania Railroad Harsimus Stem Embankment Coalition is a non-profit organization incorporated in 1998.

The mission of the organization is to preserve the historic Pennsylvania Railroad Harsimus Stem Embankment, develop its top as passive open space, and integrate the site into a network of local and regional pedestrian and biking trails, including the Hudson Waterfront Walkway and the East Coast Greenway.

The geographic focus of the coalition is mainly Jersey City although the greenways it helps create connect to other areas of New Jersey.

The Coalition does not own any property or hold conservation easements at this time.



A conceptual rendering of the Harsimus Stem Embankment Park, a long-term goal of the Coalition.

Contact Information

Stephen Gucciardo, President

Mailing Address

495 Monmouth Street
Jersey City, NJ 07302

Email Address

info@embankment.org

Phone Number

(201) 659-4204

Website

www.embankment.org

Fairview Lake & Watershed Conservation Foundation

Fairview Lake & Watershed Conservation Foundation (FL+WCP) is a non-profit organization founded in 1990. It has an all-volunteer staff and fewer than 100 members.

The mission of FL+WCF is to protect and preserve Fairview Lake and its watershed and indigenous biodiversity, including the surrounding forest, field, stream, swamp, pond, and vernal pool habitats; to foster an appreciation of nature and understanding of basic ecological principles; and in cooperation with local partner organizations, to develop a unified approach to the ecologically-oriented management of Fairview Lake and its watershed.

The organization's geographic focus is the area surrounding Fairview Lake, located in Stillwater Township, Sussex County, New Jersey. FL+WCF owns the Weigen Burner Nature Reserve on East Shore of Fairview Lake.



Fairview Lake

Contact Information

Mailing Address
369 South Riverside Drive
Neptune, NJ 07753

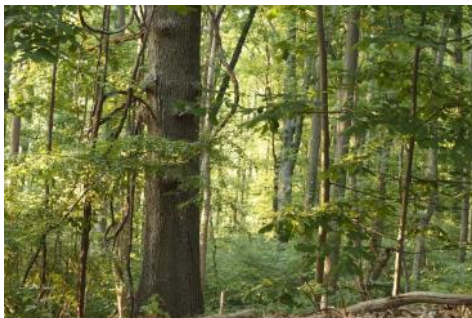
Email Address
none

Phone Number
607-865-6497

Website
none

Flat Rock Brook Nature Center

Flat Rock Brook Nature Center is a 150-acre preserve and education center on the western slope of the Palisades in Englewood, New Jersey. The Center was established in 1973 by citizens who were committed to land conservation and environmental education. One of the last remnants of the Palisades Forest, the preserve is managed by the Flat Rock Brook Nature Association whose mission is to maintain the 150-acre preserve as a natural sanctuary for plant and wildlife in our urban area and as a nature preserve available to the public for trail walks, nature study and other passive recreation.



Contact Information

Kathleen Silberstein, President

Mailing Address

443 Van Nostrand Avenue
Englewood, NJ 07631

Email Address

See website

Phone Number

201 567-1265

Website

www.flatrockbrook.org

Foodshed Alliance

The Foodshed Alliance is a grassroots, non-profit organization founded in 2001.

Its mission is to work with farmers, consumers, and agricultural professionals to foster a self-sustaining "foodshed" that supports farmers, nourishes people, respects the land, and strengthens communities.

The organization's geographic focus is northwestern New Jersey.

The Foodshed Alliance does not own property or hold easements.



Produce on display at the Blairstown Farmers Market, sponsored by the Foodshed Alliance.



Contact Information

Kendrya Close, Director

Mailing Address

P.O. Box 713
Blairstown, NJ 07825

Email Address

info@foodshedalliance.org

Phone Number

(908) 362-7967

Website

www.foodshedalliance.org

Forked River Mountain Coalition

The Forked River Mountain Coalition is a non-profit organization founded in 1994. The Coalition has 100 members and their staff is strictly volunteer.

The mission of the Forked River Mountain Coalition is to conserve, maintain, protect and restore the natural, cultural, historical, and recreational resources of the Forked River Mountains, centerpiece of a vast wilderness located in the NJ Pine Barrens.

The geographic focus of the organization is the Ocean County/Barnegat Bay Watershed area.

The Coalition owns over 100 acres of land and is actively pursuing the acquisition of additional property in the Forked River Mountain area and vicinity.



Contact Information

Kerry Jennings, President

Mailing Address

P.O. Box 219
Forked River, NJ 08731

Email Address

frmc@frmc.org

Phone Number

(609) 971-1635

Website

www.frmc.org

Friends of Holmdel Open Space

Friends of Holmdel Open Space (FoHOS) is a non-profit organization that is run by its volunteer board.

The mission of FoHOS is to facilitate the acquisition, management, preservation and protection of open lands, historic areas and parks; to solicit and receive funds from the general public and to apply for, and administer, grants from private and public sources.

Its geographic focus is Holmdel Township in Monmouth County, New Jersey.

The organization does not hold land or conservation easements but rather assists in the acquisition of land and its transfer to the township or county.

Lady Slipper Park trail construction and cleanup, a project of the Friends of Holmdel Open Space.



Contact Information

Janet Jackel, President

Mailing Address

12 Indian Creek Rd.
Holmdel, NJ 07733

Email Address

none

Phone Number

(739) 241-4935

Website

none

Friends of Hopewell Valley Open Space

Friends of Hopewell Valley Open Space (FoHVOS) is a non-profit land trust that was founded in 1987. The organization has 3 part-time staff and 400 members.

The mission of Friends of Hopewell Valley Open Space is to promote conservation through open space preservation, informed land use, wise stewardship, education and outreach.

The geographic focus is in the Hopewell Valley region of central New Jersey.

FoHVOS owns, or has an interest in, over 2,500 acres in the Hopewell Valley, including 29 preserves and 11 conservation easements.



FoHVOS volunteers participate in the group's semi-annual Clean Up Day.

Contact Information

Lisa Wolff, Executive Director

Mailing Address

P.O. Box 395
Pennington, NJ 08534

Email Address

info@fohvos.org

Phone Number

(609) 730-1560

Website

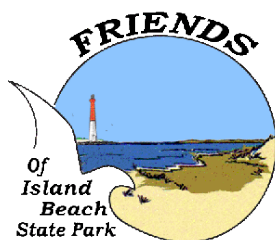
www.fohvos.org

Friends of Island Beach State Park

Friends of Island Beach State Park, Inc. is a non-profit corporation. It was incorporated in 1996 and is governed by an all volunteer board of directors.

The objectives of the Friends are to raise and receive funds or property for the enhancement of natural habitat, buildings and properties of the park; support activities, educational and special events that further public appreciation, participation and stewardship of the park; and encourage protection of the barrier island ecosystem.

The geographic focus of the Friends is Island Beach State Park, Ocean County.



Island Beach State Park

Contact Information

Patricia Vargo, President

Mailing Address

P.O. Box 406
Seaside Park, NJ 08752

Email Address

info@friendsofisp.org

Phone Number

((707) 636 4277

Website

www.thefriendsofislandbeach.org

Friends of Princeton Open Space

Friends of Princeton Open Space (FoPOS) is a non-profit organization founded in 1969; it has 1 paid staff member in addition to its members and volunteers.

The mission of FoPOS is to raise funds to assist in acquisition of easements and purchase of lands for permanent open space, advocate respectful yet worthwhile land use, foster understanding, and promote maintenance, publicity and stewardship of existing Princeton parks and open spaces.

The geographic focus of this organization is Princeton in Mercer County, New Jersey.

The Friends of Princeton Open Space does not own land or hold easements.

FoPOS



Local teens help FoPOS remove invasive plants and debris from along the D&R Canal near Princeton.



Contact Information

Wendy Mager, President

Mailing Address

57 Mountain Avenue
Princeton, NJ 08540

Email Address

info@fopos.org

Phone Number

(609) 921-2772

Website

www.fopos.org

Friends of West Windsor Open Space

Founded in 1996, Friends of West Windsor Open Space is a non-profit organization run by volunteer members.

The Friends' mission is to promote the preservation of open space in West Windsor, encourage and assist in the protection of local environment by raising funds toward the purchase of open space, foster the study of natural resource conservation, and encourage farmland preservation.

The geographic focus of the Friends is West Windsor Township in Mercer County, New Jersey.

The organization does not own land or hold easements, but has been instrumental in the establishment of a memorial arboretum and the Clean Streets Program in West Windsor.



Ronald Rogers
Arboretum



Contact Information

Allison Miller, President

Mailing Address

P.O. Box 73
West Windsor, NJ 08550

Email Address

fowwos@gmail.com

Phone Number

(609) 799-8372

Website

none

Fund for a Better Waterfront



The mission of the Fund for a Better Waterfront is to complete a contiguous public park along the Hudson River and, through leadership, advocacy and collaboration ensure that future development in the Hoboken area meets the highest standards of urban design. A mix of paid staff and citizen volunteers work together to foster public appreciation for and awareness of this historic waterfront.

*The waterfront promenade
at Hoboken's south waterfront*



Contact Information

Ron Hine, Executive Director

Mailing Address

P.O. Box 1965 | Hoboken, NJ
07030

Email Address

fbw@betterwaterfront.org

Phone Number

201.217.0500

Website

<http://betterwaterfront.org/>

Fund for Roosevelt Inc.

Fund for Roosevelt Inc. is a non-profit incorporated in 1999.

The goals of Fund for Roosevelt are to save remaining open space in the Borough of Roosevelt, establish stewardship of natural areas and propose a plan for management, preserve and support the public school, aid in the development of human and financial resources to supplement the Borough's resources, and preserve and restore objects and areas of natural, social and historic interest within the Borough.

The geographic focus of the Fund is the Borough of Roosevelt, in Monmouth County, and the only municipality in New Jersey that is, in its entirety, a registered National and State Historic District.



Scene from
Roosevelt, south of
vernal pond.

Contact Information

James C. Rogers, President

Mailing Address

PO Box 404
Roosevelt, NJ 08555-0404

Email Address

ret@pluto.njcc.com

Phone Number

none

Website

<http://pluto.njcc.com/~ret/ffr/fund.html>

Future City Inc.

Future City Inc. is a non-profit corporation, incorporated in 1997.

The mission of Future City Inc. is to foster sustainable development by educating and assisting emerging racial and ethnic communities in policy formation, which will result in meaningful and measurable participation in environmental and community development. It further aims to apply sustainable development to watershed areas and green spaces while maintaining community friendly open spaces.

The organization's geographic focus is on Elizabeth and Newark, New Jersey.

It does not own property or hold easements, although it oversees 3 programs dedicated to improving land use, water quality, watershed and open space conservation, and public health.

The offices of Future City, Inc.
in Elizabeth.



Contact Information

Michelle Doran McBean, President

Mailing Address

1045 East Jersey Street
Suite 204
Elizabeth, NJ 07201

Email Address

info@futurecityinc.org

Phone Number

(908) 659-0689

Website

www.futurecityinc.org

Fyke Nature Association

Fyke Nature Association is a non-profit organization founded in 1952 with 200 active members.

Its mission is to save undeveloped tracts of land as nature preserves and educate the public about nature and wildlife conservation.

The organization's geographic focus is Bergen County; specifically, the Saddle River subwatershed, Allendale Brook area, Ramapo River subwatershed and the Ramapo Mountains.

Fyke co-manages the Celery Farm Natural Area, a 107-acre wetlands preserve in Allendale. The Association also owns 2 land trusts: Celery Farm Land Trust and Ramapo Mountains Land Trust. Fyke does not hold conservation easements at this time.

THE FYKE NATURE ASSOCIATION

The Celery Farm, co-managed by Fyke, is home to diverse wildlife and over two-hundred forty species of birds.



Contact Information

Mike Limatola, President

Mailing Address

P.O. Box 141
Ramsey, NJ 07446

Email Address

fyke@fykenature.org

Phone Number

(201) 362-3428

Website

www.fykenature.org

Great Egg Harbor Watershed Association

The Great Egg Harbor Watershed Association was formed in 1989 and incorporated as a non-profit in 1990. The Association has over 150 members, 9 active trustees, and 2 full time staff employees.

The organization's mission is to protect and restore the Great Egg Harbor River Watershed, promote research and action to determine and secure a healthy river system, and educate the public by increasing awareness of the watershed's resources.

Its geographic focus is the Great Egg Harbor River and Watershed in the Pinelands of southern New Jersey.

The Association does not own property or hold easements, but it serves as the host organization for the Comprehensive Plan for the Great Egg Harbor National Scenic and Recreational River, and in that capacity, works closely with the National Park System.



Contact Information

Julie Akers, President

Mailing Address

P. O. Box 109
Newtonville, NJ 08346

Email Address

Julieakers56@gmail.com

Phone Number

(856) 697-6114

Website

www.gehwa.org

Great Swamp Watershed Association

The Great Swamp Watershed Association (GSWA) is a member-supported nonprofit organization. Established in 1981 by volunteers, the organization has grown to support approximately 1,500 regular members and professional staff of nine full-time and part-time employees. GSWA's mission is to protect and improve water resources in the Great Swamp region by monitoring local streams, advocating for intelligent land use, and educating communities about issues surrounding water quality and quantity.

GSWA focuses its efforts on promoting the health and natural beauty of New Jersey's 55-square-mile Great Swamp Watershed region located in southeast Morris County and northeast Somerset county.

GSWA owns and manages a 53-acre tract of forested wetland in Harding Township. Known as the Conservation Management Area (CMA), this land is being restored as a preserve. The organization also holds two conservation easements.

A boardwalk in the
Great Swamp National
Wildlife Refuge.



Contact Information

Sally Rubin, Executive Director

Mailing Address

P.O. Box 300
New Vernon, NJ 07976

Email Address

info@greatswamp.org

Phone Number

(973) 538-3500

Website

www.greatswamp.org

Greater Newark Conservancy

The Greater Newark Conservancy is a private non-profit organization founded in 1987. It has 20 paid staff including many members and volunteers.

The mission of Greater Newark Conservancy is to improve the quality of life in New Jersey's urban communities through environmental education, community greening and gardening, job training and advocacy for environmental justice.

The Conservancy is a statewide organization with a special emphasis in Newark, New Jersey.

The organization transformed two vacant buildings and the surrounding 1.5 acres in downtown Newark into the state's first urban environmental education resource center. It does not hold conservation easements.



Students learn to appreciate the environment at one of GNC's "living laboratories."



Contact Information

Robin Dougherty, Executive Director

Mailing Address

32 Prince St.
Newark, NJ 07103

Email Address

See website

Phone Number

(973) 642-4646

Website

www.citybloom.org

GreenFaith

GreenFaith's mission is to inspire, educate and mobilize people of diverse religious backgrounds for environmental leadership. GreenFaith believes that protecting the earth is a religious value, and that environmental stewardship is a moral responsibility. Guided by spirit, stewardship and justice, this organization's board of directors and ten staff members work to engage the public in advocating for sustainability in our world.



Contact Information

Reverend Fletcher Harper, Executive Director

Mailing Address

101 S 3rd Ave
Highland Park, New Jersey

Email Address

info@greenfaith.org

Phone Number

(732) 565-7740

Website

<http://www.greenfaith.org>

Grover Cleveland Park Conservancy

The Grover Cleveland Park Conservancy is a New Jersey non-profit organization founded in 2001 dedicated to the maintenance, restoration and enhancement of the Grover Cleveland Park located in Caldwell and Essex Fells in partnership with the Essex County Department of Parks, Recreation and Cultural Affairs.

The Conservancy is administered by a Board of Trustees and an Advisory Board.

The Conservancy serves as the park's advocate. Its members stroll through the park daily, keeping the Park System apprised of maintenance and safety needs.



Children's Playground

Contact Information

Diane Mensinger, President

Mailing Address

P.O. Box 203
Caldwell, NJ 07006

Email Address

gcpc@molink.com

Phone Number

(862) 525-2243

Website

www.groverclelandpark.org

Hackensack Riverkeeper

Incorporated in 1997, the Hackensack Riverkeeper Inc. is a non-profit with a staff of 5 and over 300 volunteers.

The mission of the organization is to provide representation for the natural living resources of the Hackensack River, manifested through environmental advocacy, education and conservation programs.

Its geographic focus is the Hackensack River watershed, located in Bergen County, New Jersey.

The Hackensack Riverkeeper does not own property or hold conservation easements.



Contact Information

Captain Bill Sheehan, Executive Director

Mailing Address

231 Main Street
Hackensack, NJ 07601

Email Address

info@hackensackriverkeeper.org

Phone Number

(201) 968-0808

Website

www.hackensackriverkeeper.org

Harding Land Trust

The Harding Land Trust is a non-profit organization founded in 1990. It has 300 members.

Its mission is to acquire, conserve and manage scenic, natural and historic lands in order to maintain the existing rural character for present and future generations.

The geographic focus of Harding Land Trust is Harding Township in Morris County, New Jersey.

The organization manages 35 fee, easement, and trail easement properties totaling approximately 290 acres.



The offices of Harding Land Trust in New Vernon.



Contact Information

Nik Bjorkedal ,President

Mailing Address

P.O. Box 576
New Vernon, NJ 07976

Email Address

contactus@hardinglandtrust.org

Phone Number

(973) 267-2515

Website

www.hardinglandtrust.org

Hudson River Waterfront Conservancy of New Jersey

The Hudson River Waterfront Conservancy is a non-profit organization formed in 1988 and is governed by a volunteer Board of Trustees.

Its mission is to oversee the creation of the Hudson River Walkway in New Jersey and provide a voice of support by working closely with local residents, governmental agencies, developers, and land owners to assist in the Walkway's development, and to make sure the Walkway is accessible to the public.

The geographic focus of the Conservancy is in Hudson and Bergen counties in northeastern New Jersey.

The organization does not own land or hold conservation easements.



The ribbon cutting of a half-mile section of the 18.5 mile Hudson River Walkway.

Contact Information

Helen Manogue, President

Mailing Address

P.O. Box 6217
Hoboken, NJ 07030

Email Address

info@HudsonRiverWaterfront.org

Phone Number

(201) 963-3511

Website

www.hudsonriverwaterfront.org

Hunterdon Land Trust

Hunterdon Land Trust is a non-profit organization founded in 1996. It has full-time staff and more than 800 supporters and volunteers.

The mission of HLT is to preserve, protect, and enhance the county's scenic beauty and its environmental and historic resources; to provide for the permanent preservation of farmland and to support and foster agricultural viability; and to promote the conservation and appropriate management of woodlands and open space. It accomplishes these goals through education, preservation, and partnership.

The geographic focus of the organization is Hunterdon County, New Jersey.

In addition to facilitating the preservation of 4,000 acres of land to-date, HLT owns and manages the 42-acre Dvoor Farm in Raritan Township, New Jersey.



Hunterdon Land Trust
Protecting the places you love



Volunteers of the HLT participate in trail maintenance and clean-up.

Contact Information

Patricia Ruby, Executive Director

Mailing Address

111 Mine St.
Flemington, NJ 08822

Email Address

info@hunterdonlandtrust.org

Phone Number

(908) 237-4582

Website

www.hunterdonlandtrust.org

Ironbound Community Corporation

The Ironbound Community Corporation (ICC), founded by residents in 1969, is a multi-service, community-based organization rooted in and representative of the ethnically diverse Newark neighborhood called Ironbound.

ICC's mission is to engage and empower individuals, families and groups in realizing their aspirations and together work to create a just, vibrant and sustainable community.

ICC services more than 600 people daily with programs that include early childhood care and education, school-age programs, family services, adult education, immigration services, senior citizen services, environmental justice, community information and neighborhood planning.



Contact Information

Joseph Della Fave, Executive Director

Mailing Address

317 Elm St.
Newark, NJ 07105

Email Address

info@ironboundcc.org

Phone Number

(973) 465-0555

Website

www.ironboundcc.org

Isles, Inc.



Founded in 1981 by students and faculty of Princeton University, Isles is a community development and environmental non-profit organization.

With a mission to foster more self-reliant families in healthy sustainable communities, Isles provides a variety of self-help tools and services which include community and school gardening, nutrition education, environmental education, green housing and real estate development, youth job training and educational services, green job training, energy efficiency education, community planning and more. Isles also renovates parks and playgrounds.

Isles provides public education statewide with a specific geographic focus in Trenton, NJ.

Two students plant a school garden at their elementary school in Trenton, NJ.



Contact Information

Martin Johnson, President and CEO

Mailing Address

10 Wood Street
Trenton, NJ 08618

Email Address

info@isles.org

Phone Number

(609) 341-4700

Website

www.isles.org

Jacques Cousteau National Estuarine Research Reserve

The Jacques Cousteau National Estuarine Research Reserve is dedicated to improving the management of New Jersey coastal environments through science, education, and stewardship. It is part of the National Estuarine Research Reserve System. The Reserve encompasses about 115,000 acres in southeastern New Jersey. Less than 2% of this land is developed, preserving a healthy ecosystem and providing the opportunity for long-term monitoring and research. The land is made up of a variety of habitats, and is home to thousands of plant and animal species, some of which are endangered.

The Research Reserve has 12 paid staff, and has facilities in Tuckerton and Little Egg Harbor.



Contact Information

Michael P. De Luca, Reserve Manager

Mailing Address

88 Lipman Drive,
New Brunswick, NJ 08903

Email Address

deluca@marine.rutgers.edu

Phone Number

(848) 932-3474

Website

www.jcnerr.org

KEEP Conservation Foundation



Founded in 1998, KEEP Conservation is a non-profit organization dedicated to the protection and survival of migratory and breeding birds. Staffed by unpaid volunteers, it has 75 members. All donations to KEEP Conservation go directly to purchase and manage land and to educational programming.

KEEP has preserves in Germantown, New York; Port Republic, New Jersey; and Pamela Kahn Bacca Preserve, Maricopa County, Arizona.

KEEP owns 252 acres in total with 80 acres in New Jersey. KEEP owns no easements.



Keep Conservation Foundation's Port Republic New Jersey Preserve is an 83-acre preserve of woods, fields, pond and salt marsh.

Contact Information

Linda Atkins, President

Mailing Address

38 West 11th Street
New York, NY 10011-8778

Email Address

keepconservation@gmail.com

Phone Number

(212) 254-9213

Website

www.keepconservation.com

Kingston Greenway Association

Kingston Greenways Association has a goal to establish a permanent green belt around the village of Kingston, a town on the border of Middlesex and Somerset Counties. The greenway will consist of natural environments, recreational park land, agricultural and horticultural land, wetlands, streams and ponds, and sites of historical interest. The Association works in partnership with other regional, state and national groups in pursuit of open space preservation and awareness.



Above: The Association recently preserved an ecologically-sensitive area of the Princeton Ridge.



Contact Information

Charlie Dieterich, President

Mailing Address

Kingston Greenways Association
P.O. Box 391
Kingston, New Jersey
08528-0391

Email Address

contact@kingstongreenways.org

Phone Number

None

Website

<http://kingstongreenways.org/>

Lake Hopatcong Foundation



The Lake Hopatcong Foundation is dedicated to protecting and improving Lake Hopatcong in Sussex County for both present and future generations. They operate with three staff and many volunteers. The group runs a number of projects and initiatives, which include clean-ups, monitoring water quality, tackling invasive species, and research partnerships with local universities. They also work to maintain and improve recreation opportunities on and around the lake, such as hiking and boating.

Volunteers at a fall lake clean-up.



Contact Information

Jessica K. Murphy, President

Mailing Address

37 Nolan's Point Park Rd
Lake Hopatcong, NJ 07849

Email Address

info@lakehopatcongfoundation.org

Phone Number

(973) 663-2500

Website

www.lakehopatcongfoundation.org

Lamington Conservancy

The Lamington Conservancy is a non-profit organization founded in 1999.

Its mission is to protect and preserve the rural character and open countryside of the Lamington River Valley. Focusing on land conservation, land use planning, promotion of a rural economy, and the preservation of the country's natural and historic resources, the Conservancy promotes farmland preservation and the protection of strategic lands through acquisition and cooperative efforts with landowners, land trusts, and local and state governments. Furthermore, the Conservancy is dedicated to raising the awareness of landowners as to the economic, social, and environmental reasons for protecting open land.

The Conservancy's geographic focus is the Lamington River Valley in Somerset, Hunterdon, and Morris counties.

The Conservancy owns interest in preserved lands but does not hold conservation easements.



Bedminster 'heartland' tract is preserved through the efforts of the Lamington Conservancy

Contact Information

Alexandra Allen, President

Mailing Address

30 Manor Rd
Phillipsburg, NJ 08865

Email Address

lamingtonconservancy@yahoo.com

Phone Number

(908) 234-0041

Website

none

Lawrence Brook Watershed Partnership

The Lawrence Brook Watershed Partnership is a non-profit organization founded in 1997 and operated by volunteers. The geographic focus is the Lawrence Brook Watershed in Middlesex County.

The group seeks to provide a unifying environmental force for this area. It takes on such projects as land use, advocacy, clean-ups, biological and chemical assessments, and more. The Partnership trains and equips volunteers to handle these tasks. They also host activities such as nature walks, an annual bike tour, and numerous



environmental education programs.

Westons Mill Pond, part of the Lawrence Brook Watershed.

Contact Information

Alan Godber, President

Mailing Address

85 Washington Ave
Milltown, NJ 08850

Email Address

ContactLBWP@aol.com

Phone Number

(732) 249-LBWP (5297)

Website

www.lbwp.org

Lawrence Township Conservation Foundation

The Lawrence Township Conservation Foundation, founded in 1987, is a volunteer, community-based, nonprofit, tax-exempt organization with 75 supporters.

The Foundation's mission is dedicated to identifying and saving important portions of Lawrence Township's remaining open spaces. It partners with other governmental agencies and land trusts to accomplish its conservation goals.

The organization's geographic focus is Lawrence Township in Mercer County.

The organization has helped preserve several hundred acres.



Lawrence Township Central Park

Contact Information

Pam Mount, President

Mailing Address

P. O. Box 6801
44 Titus Avenue
Lawrenceville, NJ 08648 -0801

Email Address

none

Phone Number

(609) 896-9714

Website

none

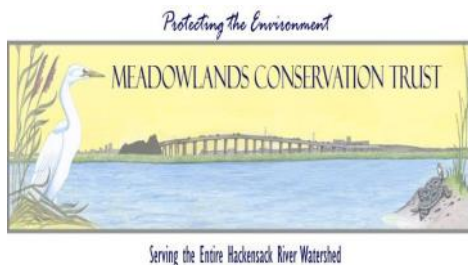
Meadowlands Conservation Trust

The Meadowlands Conservation Trust is a public agency comprised of environmentalists, private citizens and government officials.

Its mission is to acquire environmentally valuable land, preserve open space and enhance the environment, creating a healthier landscape for wildlife.

The geographic focus of the organization is the Hackensack Meadowlands District and the Hackensack River Watershed in Bergen and Hudson counties, New Jersey.

The Meadowlands Conservation Trust owns the Skeetkill Creek Marsh Park, the Richard P. Kane Tract in Carlstadt and South Hackensack, NJ, and it holds conservation easements in Demarest, Norwood and Emerson NJ, totaling over 800 acres of land.



The Richard P. Kane Natural Area is undergoing a 254-acre enhancement project

Contact Information

Bernard Nangle, CEO

Mailing Address

1 DeKorte Park Plaza
Lyndhurst, NJ 07071

Email Address

colleen.mercado@njmeadowlands.gov

Phone Number

201-460-1700

Website

www.meadowlandsconservationtrust.org

Medicine Waters Conservancy

The Medicine Waters Conservancy was formed in 2001 as a non-profit organization to raise funds for the purchase and conservation of land.

Its mission is to ensure the preservation of lands through purchase by the Conservancy or other organizations dedicated to preservation and to work to restore a healthy ecosystem, repair damage that has taken place through human misuse and prevent future misuse.

Medicine Waters Conservancy's geographic focus is the Pine Barrens of south-central New Jersey.

The organization does not own land or hold conservation easements, but continues to take an active role in the stewardship and maintenance of many properties.



Volunteers bring debris and small plants into the Pine Barrens to support the growth of new flora.



Contact Information

Tom Brown Jr., Chairman

Mailing Address

PO Box 487
Waretown, NJ 08758

Email Address

info@medicinewaters.org

Phone Number

(609) 971-7511

Website

none

Monmouth Conservation Foundation

The Monmouth Conservation Foundation is a corporation founded in 1977. It currently has six paid staff members and many volunteers and members.

The mission of the organization is to acquire, hold, preserve and protect the open lands in Monmouth County, the geographic focus of Monmouth Conservation Foundation.

The Foundation owns or holds about 30 properties. Many of the Foundation's acquisitions are transferred to a municipality, county parks system, or individual. The organization also holds 6 conservation easements.



Representatives of Monmouth County, MCF, and the landowners hold a map of a conservation success.

Contact Information

William Kastning, Executive Director

Mailing Address

P. O. Box 4150
Middletown, NJ 07748

Email Address

info@monmouthconservation.org

Phone Number

(732) 671-7000 ext 101

Website

www.monmouthconservation.org

Montgomery Friends of Open Space

Montgomery Friends of Open Space (MFoOS) is a non-profit organization founded in 2002, focused in Montgomery Township in Somerset County. It operates with the efforts of an all-volunteer staff, members, and other volunteers.

The mission of MFoOS is to preserve remaining open space in Montgomery Township, to provide and support stewardship of the land that is preserved, and to sustain active farming.

MFoOS has preserved approximately 420 acres of open space since its establishment and manages preserved land in partnership with Montgomery Township for passive recreation and for habitat protection. The group leads walks and programs to get local residents outdoors enjoying trails, pathways and to connect with the natural world. The group also sponsors the community farmers market featuring local produce, organic vegetables, organic meat and other NJ Fresh products.



Drake Farm
Closing



Contact Information

Sarah Roberts, President

Mailing Address

P.O. Box 287
Skillman, NJ 08558

Email Address

info@montgomeryfriends.org

Phone Number

(908) 359-4837

Website

www.montgomeryfriends.org

Musconetcong Mountain Conservancy

The Musconetcong Mountain Conservancy was formed in 2002 to promote the preservation of the New Jersey Highlands and surrounding environs. Musconetcong Mountain is a ridge which runs parallel to the Musconetcong River through the northern part of Hunterdon County.

The Conservancy works to identify and preserve natural areas and cultural resources, establishing a corridor of continuous greenways and nature trails along the Highland ridge. They participate in programs to protect and restore the sensitive watershed and support government and other private organizations and individuals to encourage land conservation.



Building for
the next
generation—
Tower Hill
County Park
in Hunter-
don County.



Contact Information

Suzanne Wilder, President

Mailing Address

424 Charlestown Road
Hampton, NJ 08827

Email Address

sjw22021@yahoo.com

Phone Number

none

Website

none

Musconetcong Watershed Association

The Musconetcong Watershed Association (MWA) is an independent, non-profit organization incorporated in 1992. A Board of Trustees oversees the operations and programs, while 5 professional staff members conduct the daily operations of the Association. The MWA has a membership base of approximately 100 families, businesses and organizations.

Its mission is to protect and improve the quality of the Musconetcong River Watershed, including its natural and cultural resources, through public education and awareness programs, water monitoring, sustainable land management, and community involvement.

The geographic focus of the MWA is the Musconetcong River valley, located in northwestern New Jersey.

The organization does not own property or hold conservation easements.



People of all ages participate in the annual MWA spring clean up.



Contact Information

Alan Hunt, Executive Director

Mailing Address

10 Maple Ave
P.O. Box 113
Asbury, NJ 08802

Email Address

alan@musconetcong.org

Phone Number

(908) 537-7060

Website

www.musconetcong.org

National Biodiversity Parks Inc.



National Biodiversity Parks, Inc. (NBP) is a federally designated non-profit land preservation and ecological management firm founded in 2000. It has 15 volunteers.

National Biodiversity Park's core mission is to preserve wildlife and the varied habitats needed to sustain it. NBP works toward this goal via diverse projects from acquisition/restoration of natural lands to endangered species monitoring to environmental education.

NBP's geographic focus is the state of New Jersey.



Contact Information

Fred Virrazzi, President and Chief Executive Officer

Mailing Address

18 Tennyson Street
Carteret, NJ 07008

Email Address

nationalbiodiversityparks@comcast.net

Phone Number

(201) 293-4185

Website

www.nationalbiodiversityparks.org

Natural Lands Trust (NJ)



The New Jersey NATURAL LANDS TRUST

The New Jersey Natural Lands Trust is a state government agency that preserves land to promote public enjoyment of the outdoors and to conserve elements of natural diversity, such as habitat for rare plant and animal species and rare ecological communities.

Currently the Trust owns or manages over 29,500 acres of open space from Sussex to Cape May Counties, including over 2,500 acres of conservation easements.



Photo credit: Herb Lord

Contact Information

Robert J. Cartica, President

Mailing Address

P.O. Box 420
Trenton, NJ 08625-0420

Email Address

NatLands@dep.nj.gov

Phone Number

(609) 984-1339

Website

[http://nj.gov/dep/njnl/
index.htm](http://nj.gov/dep/njnl/index.htm)

Natural Lands Trust (PA)

Natural Lands Trust (NLT) is a non-profit organization founded and incorporated in 1953. It has about 57 paid staff members plus many volunteers and members.

The mission of NLT is to protect landscapes in eastern Pennsylvania and southern New Jersey by preserving and caring for natural lands, healthy habitats, and clean watersheds for the benefit of native plants, wildlife, and current and future generations. It accomplishes its conservation goals through saving land, stewardship, and connecting people to nature.

The geographic focus of Natural Lands Trust is the Delaware Valley.



The organization owns and manages 42 nature preserves, totaling over 20,000 acres, and holds conservation easements and other restrictions exceeding 18,000 acres.

Contact Information

Molly Morrison, President

Mailing Address

Hildacy Farm Preserve
1031 Palmers Mill Road
Media, PA 19063

Email Address

info@natlands.org

Phone Number

(610) 353-5587

Website

www.natlands.org

Natural Resource Education Foundation

The Natural Resource Education Foundation is a non-profit organization founded in 1976. It has no paid staff. The group is dedicated to environmental leadership and to developing a well-informed and environmentally-aware public. They do this through interactive programs at the 194-acre Lighthouse Center in Waretown, Ocean County.



The Lighthouse Center property includes diverse habitats such as salt marshes, freshwater ponds and swamps, and maritime forests, among others. The Center also features facilities such as lodging, a computer lab, a marine field station, and a pier. The “Experience Barnegat Bay” programs offer education and hands-on experience.



A picture from one of the “Experience Barnegat Bay” programs, Waterfowling & Family Fun Day.

Contact Information

Nancy Eriksen, President

Mailing Address

P.O. Box 747
Waretown, NJ 08758

Email Address

pgalie@nrefnj.org

Phone Number

(609) 698-8003

Website

www.lighthousecenternj.org

Nature Preservation Council Inc.

The Nature Preservation Council, Inc. (NPC) is a non-profit organization founded in 1993, consisting of environmentalists and wildlife enthusiasts.

The Council is dedicated to acquiring land and setting it aside as true wildlife sanctuaries. It does not allow any commercial or recreational use of their lands except for bird watching and hiking. Volunteers perform activities such as putting osprey nests in the coastal areas of Atlantic and Cape May counties. Inland activities include providing habitat for many types of wildlife.

The geographic focus of NPC is Atlantic and Cape May counties in southern New Jersey.

The NPC has acquired over 120 acres of land through private and corporate donations.



Contact Information

Gloria D. Maloney, President

Mailing Address

P.O. Box 127
Somers Point, NJ 08244

Email Address

See website

Phone Number

(609) 677-9119

Website

www.npc-inc.org

New Jersey Agricultural Land Trust

The New Jersey Agricultural Land Trust (NJALT) was founded as a state and federal registered charitable organization in 2007. It is the first and only statewide farmland conservation organization focused exclusively on preserving farms.

NJALT is dedicated to the Garden State's farming heritage, its sustainability and beneficial use. Its goals are to provide farm owners with land preservation options that combine landowners conservation ethic with forward looking business practices, as needed for independent and productive farm operations and to better prepare future farmers.

The geographic focus of the organization is the state of New Jersey.



Contact Information

Pat O'Connell/Andy Strauss, Co-managers

Mailing Address

P.O. Box 9924
Trenton, NJ 08608

Email Address

njaglandtrust@gmail.com

Phone Number

609-462-9754

Website

none

New Jersey Audubon Society

The New Jersey Audubon Society (NJAS) is a private non-profit organization founded in 1897. It has about 71 full and part-time staff located throughout 10 facilities.

The mission of NJAS is to foster environmental awareness and a conservation ethic among New Jersey's citizens, protect New Jersey's birds, mammals, other animals and plants, and promote preservation of New Jersey's valuable natural habitats. NJAS supports sound conservation practices, programs, and legislation; disseminates information on the natural environment; advances knowledge of New Jersey's flora and fauna through field research; and acquires, establishes, and maintains wildlife sanctuaries and educational centers.

The organization's geographic focus is the state of New Jersey.

NJAS maintains stewardship of 34 wildlife sanctuaries and also holds a 24-acre conservation easement in Morris County.



NEW JERSEY
AUDUBON
SOCIETY



Bird watching at Scherman-Hoffman Sanctuary in Somerset County.

Contact Information

Eric Stiles, President and Chief Executive Officer

Mailing Address

9 Hardscrabble Road
Bernardsville, NJ 07924

Email Address

See website

Phone Number

(908) 204-8998

Website

www.njaudubon.org

New Jersey Conservation Foundation

New Jersey Conservation Foundation was founded in 1960 to preserve what is now the Great Swamp National Wildlife Refuge. As a private not-for-profit organization with 35 paid staff, assisted by many volunteers, the mission is to preserve New Jersey's land and natural resources for the benefit of all.

Through acquisition, stewardship, and advocacy, the Foundation protects strategic lands, promotes strong land use policies, and forges partnerships with other conservation groups to achieve conservation goals. They also work to educate and support conservation leaders and offer healthy outdoor recreation opportunities for the public.

The organization has helped protect over 125,000 acres in total and currently manages over 27,000 acres, including 128 conservation easements.

Geographic focus of the organization is New Jersey.



New Jersey Conservation
FOUNDATION



NJ Conservation Foundation's largest acquisition, 9400-acre Franklin Parker Preserve in Chatsworth, Burlington County.

Contact Information

Michele Byers, Executive Director

Mailing Address

170 Longview Road
Bamboo Brook
Far Hills, NJ 07931

Email Address

info@njconservation.org

Phone Number

(908) 234-1225

Website

www.njconservation.org

New Jersey Highlands Coalition



The New Jersey Highlands Coalition is a non-profit organization with 8 paid staff members. Its mission is to advocate for the natural and cultural resources of the NJ Highlands Region, which includes 90 municipalities in 7 counties (Bergen, Passaic, Sussex, Warren, Hunterdon, Warren, Morris), and to educate the far greater and widespread number of people who depend on the Highlands for some or all of their water.

The Coalition also sponsors the Annual Highlands Festival at Waterloo; a music, art, history, advocacy, and local food festival celebrating all things Highlands.

The organization does not own property or hold conservation easements.

Hikers enjoy the view at a state park in the Highlands region.



Contact Information

Julia Somers, Executive Director

Mailing Address

508 Main Street
Boonton, NJ 07005

Email Address

info@njhighlandscoalition.org

Phone Number

(973) 588-7190

Website

www.njhighlandscoalition.org

New Jersey Invasive Species Strike Team

The NJ Invasive Species Strike Team works to prevent the spread of emerging invasive species across New Jersey by providing public and private land stewards tools and information to search for emerging invasive species, map locations where populations are detected and eradicate the invasive species that are found. **The Team** administers a data clearinghouse, prepares an annual catalog of invasive species present in and around the state, prioritizes problem species, provides training for land stewards and property owners, coordinates detection and eradication programs and shares its experience with the public.



The Strike Team is a program of the Friends of Hopewell Valley Open Space.



Combating European water chestnut, an aquatic invasive plant that is becoming increasingly widespread.

Contact Information

Michael Van Clef, Program Director

Mailing Address

P.O. Box 5752
Hillsborough, NJ 08844

Email Address

info@njisst.org

Phone Number

(908) 722-1200 ext. 241

Website

www.njisst.org

New Jersey Tree Foundation



The NJ Tree Foundation is a statewide nonprofit organization dedicated to planting trees in New Jersey's most urban neighborhoods, where the need is greatest. Through tree planting, volunteerism, and partnerships, we assist numerous communities in improving their environment

and quality of life.

Since 1998, the NJ Tree Foundation has planted 204,360 trees across the state with volunteers, by hand. The organization has 5 staff members and countless volunteers.



Contact Information

Lisa Simms, Executive Director

Mailing Address

576 Leesville Road,
Jackson, NJ 08527

Email Address

See website

Phone Number

See website

Website

[Www.njtreefoundation.org](http://www.njtreefoundation.org)

NY/NJ Baykeeper

Founded with the help of the Hudson Riverkeeper and the American Littoral Society in 1989, the NY/NJ Baykeeper is now a wholly independent nonprofit. Baykeeper has full and part-time staff and many dedicated volunteers.



The mission of NY/NJ Baykeeper is to protect, preserve, and restore the ecological integrity and productivity of the Hudson-Raritan Estuary to benefit the natural and human communities of the watershed. The Baykeeper seeks to end pollution, improve public access, conserve and restore public lands, restore aquatic habitats, encourage appropriate and discourage inappropriate development, carry out public education, and work with federal and state regulators and citizen groups.



The geographic focus of the organization is the Hudson-Raritan Estuary in the New York/New Jersey metropolitan region.

The Baykeeper does not own land or hold conservation easements.

Contact Information

Debbie Mans, Executive Director

Mailing Address

52 West Front Street
Keyport, NJ 07735

Email Address

mail@nynjbaykeeper.org

Phone Number

(732) 888-9870

Website

www.nynjbaykeeper.org

New York-New Jersey Trail Conference

New York-New Jersey Trail Conference (NYNJTC) is an organization founded in 1920. The organization has a small paid staff, but it is volunteer-driven and has over 10,000 members.

The mission of NYNJTC is to develop, build, and maintain hiking trails, protect hiking trail lands through support and advocacy, and educate the public in the responsible use of trails and the natural environment.

The geographic focus of the organization is the New York-New Jersey metropolitan region.

NYNJTC owns some undeveloped lands for trail access and several parcels in New York State. It also holds right-of-way easements for the Appalachian Trail. Volunteers maintain miles of trails on public lands.



A hiker takes advantage of one of NYNJTC's many well-maintained trails.



Contact Information

Edward Goodell, Executive Director

Mailing Address

600 Ramapo Valley Rd
Route 202
Mahwah, NJ 07430

Email Address

office@nynjtc.org

Phone Number

(201) 512-9348

Website

www.nynjtc.org

Old Pine Farm Natural Lands Trust

The Old Pine Farm Natural Lands Trust, created in 1992, is run by its volunteer members.

The Trust's mission is to conserve the natural features of the land and to educate the public about this environmental treasure along Big Timber Creek, which is managed by the Trust with guidance from the New Jersey Conservation Foundation.

The geographic focus of the organization is the Big Timber Creek and surrounding area, located in Deptford Township in Gloucester County, New Jersey.

The Trust owns and manages the Old Pine Farm, a 30-acre property. It does not hold conservation easements.

Volunteer workers install a new split rail fence next to one of two mosaic pillars made by members of the Land Trust.



Contact Information

Carl Ford, Chairperson

Mailing Address

340 Pine Avenue
Deptford, NJ 08096

Email Address

info@oldpinefarm.org

Phone Number

856-579-4441

Website

none

Open Space Institute

The Open Space Institute (OSI) is an organization incorporated in 1964 and employs about 30 paid staff.

The mission of the OSI is to protect scenic, natural, and historic landscapes to ensure public enjoyment, conserve habitats, and sustain community character. OSI achieves its goals through land acquisition, conservation easements, regional loan programs, fiscal sponsorship, creative partnerships, and analytical research.

The geographic focus of the organization is the eastern United States.

As Open Space Institute works primarily in New York, it does not own land or hold easements in New Jersey. Apart from the headquarters in New York City, the OSI has a second office in Albany NY.



Open Space Institute

OSI gives loans to conservation groups all over the East Coast to further extend or protect preserves; Codario farm in Atlantic County NJ received one such loan.

Contact Information

Kim Elliman, Chief Executive Officer

Mailing Address

1350 Broadway
Suite 201
New York, NY 10018

Email Address

webmaster@osiny.org

Phone Number

(212) 290-8200

Website

www.osiny.org

Palisades Park Conservancy

The Palisades Parks Conservancy's mission is to support and protect the natural and cultural resources of the parks and historic sites of the Palisades Interstate Park system, while raising public awareness and supporting educational opportunities about the parks' national heritage. Founded in 2002 as the non-profit partner of the Palisades Interstate Park Commission (PIPC), the Conservancy has worked closely with PIPC to raise funds in support of infrastructure improvements, educational programming, scientific research and conservation of natural resources, historic preservation, and outreach. Over the past 13 years, the Conservancy has raised over \$6 million in support of the PIPC's 29 parks and historic sites.

PIPC is a federally chartered bi-state system with jurisdiction over 20 state parks and eight historic sights. Preservation, education and recreation form the core of the Commission's services. PIPC manages more than 110,000 acres of forest, wildlife habitats, and cultural resources in New York and New Jersey and greets more than nine million visitors each year.



Palisades Park, NJ

Contact Information

Joshua E. Hyman, M.D., President

Mailing Address

3006 Seven Lakes Drive
P.O. Box 427
Bear Mountain, NY 10911

Email Address

See website

Phone Number

(845) 786-2701

Website

www.palisadesparksconservancy.org

Passaic River Coalition

The Passaic River Coalition (PRC) is an urban watershed association active since 1969 in protecting water quality and quantity of the entire Passaic River watershed of northern New Jersey and Rockland and Orange Counties, New York. PRC gives assistance and stewardship for the preservation and protection of over 1,000 miles of waterways from the headwater streams in the Highlands of New York and New Jersey to the urbanized lower Passaic valley and Newark Bay.

The Coalition owns 1052 acres of watershed lands in 20 municipalities.



The Butler Raceway, a PRC-owned property, along the Pequannock River.



Contact Information

Laurie Howard, Chair

Mailing Address

330 Speedwell Avenue
Morristown, NJ 07960

Email Address

lhoward.passaicriver@gmail.com

Phone Number

(973) 532-9830

Website

<http://www.passaicriver.org/>

Pequannock River Coalition

The Pequannock River Coalition is a non-profit organization with 500 members.

The Coalition focuses on water quality monitoring, riparian restoration, and youth environmental education.

The geographic focus of the organization is the Pequannock River watershed in Sussex, Passaic, and Morris Counties, New Jersey.

A project of the Coalition, the Pequannock River Greenway, continues to increase with several open space purchases in the last few years and more planned. The Coalition It is also in the process of creating a new water trail and a new willow garden.



Coalition volunteers plant trees along rivers to stop erosion, provide a habitat for wildlife, and restore lost vegetation.



Contact Information

Ross Kushner, Executive Director

Mailing Address

P.O. Box 392
Newfoundland, NJ 07435

Email Address

pequannockriver@optonline.net

Phone Number

(973) 492-3212

Website

www.pequannockriver.org

Phillipsburg Riverview Organization

The Phillipsburg Riverview Organization (PRO) is a non-profit organization, established in 1989, with a volunteer staff of 20 and several hundred members.

The mission of PRO is to preserve the character of Warren and Hunterdon Counties through retaining interest and vitality in its hamlets, small towns and cities through revitalization, by discouraging inappropriate land use of open spaces and by protecting natural resources, preferably through preservation.

The organization's geographic focus is Warren and Hunterdon Counties in New Jersey.

PRO owns land in fee, the largest holding of which is a 128-acre grassland preserve in Pohatcong Township, Warren County, New Jersey.



Supporters of the organization's REALSmart program protest housing development on farmland.

Contact Information

Reggie Regrut, Chairperson

Mailing Address

P.O. Box 291
Phillipsburg, NJ 08865

Email Address

rregrut@yahoo.com

Phone Number

(908) 859-5632

Website

www.proriverview.org

Pinelands Preservation Alliance

The Pinelands Preservation Alliance (PPA) is a private non-profit membership organization founded and incorporated in 1989. It has 8 paid staff and over 3,000 members.

PPA's mission is to preserve the resources of the New Jersey Pinelands through education and advocacy.

The organization's geographic focus is the Pinelands region of southern New Jersey.

Pinelands Preservation Alliance owns the historic Bishop Farmstead, which serves as its headquarters and Pinelands visitors center.



PPA offers many programs such as guided canoe trips along the Mullica River (shown), Jersey Devil Hunts, and the Pinelands Heritage Series of Lectures and field trips.



Contact Information

Carleton Montgomery, Executive Director

Mailing Address

17 Pemberton Road
Southampton, NJ 08088

Email Address

See website

Phone Number

(609) 859-8860

Website

www.pinelandsalliance.org

Pompeston Creek Watershed Association

The Pompeston Creek Watershed Association (PCWA) was incorporated in 1963 and obtained non-profit status in 1998. It has about 20 volunteers.

The mission of the organization is to promote the restoration and conservation of the natural resources of the Pompeston Creek and its watershed; protect and conserve animal life, forest and other plant life, water sources, and soils; and encourage understanding of the need for such conservation through education, scientific investigations and research.

PCWA's geographic focus is the Pompeston Creek Watershed, located in Burlington County, New Jersey.

The Association does not own property or hold easements.



**Pompeston Creek
Watershed Association**

Celebrating 50 years!

1963 to 2013



Students from the high school help PCWA with a stream clean-up in the Pompeston tidal marsh.

Contact Information

Mark Jendrzewski, President

Mailing Address

P.O. Box 2883
Cinnaminson, NJ 08077

Email Address

pompestoncreek@gmail.com

Phone Number

(856) 291-6933

Website

www.pompestoncreek.org

POWWW



Protect Our Wetlands,
Water and Woods

POWWW, Protect our Wetlands, Water & Woods, is a not-for-profit conservation organization and land trust based in Denville, New Jersey with the mission to protect the wetlands, woodlands and potable water supplies throughout the Beaver Brook watershed in Denville, Rockaway and Boonton Townships. POWWW identifies and supports land acquisition, provides site stewardship and offers public education programs.

POWWW identifies properties, maps boundaries, creates awareness and motivates funding from a variety of sources. POWWW also stewards properties by blazing and repairing trails, removing invasive plants and pests, encouraging passive recreation and monitoring usage and damage. Educational activities include guided hikes and programs for children and adults.

Photo is overview of POWWW-stewarded property in Denville.



Contact Information

Jim Florence President

Mailing Address

POWWW
PO Box 438
Denville, NJ 07834

Email Address

info@powww.org

Phone Number

256-340-3111

Website

Powww.org

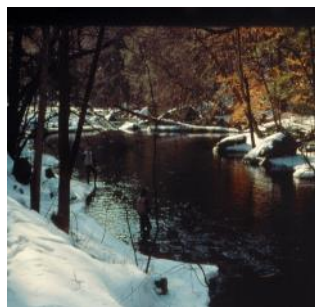
Rahway River Association

The Rahway River Association (RRA) is a non-profit group established in 1992.

The RRA's mission is to protect and restore the Rahway River and its ecosystem. To help fulfill its goals, the organization provides opportunities for networking among communities and organizations in the Rahway Watershed; promotes coordination between public and private entities to preserve and enhance the River's ecological functions and benefits; works in cooperation with communities and other organizations to undertake ecologically beneficial activities; and provides education, curriculum support activities, community awareness, and environmental stewardship relating to the Rahway River and its natural resources.

The organization's geographic focus is the 24-mile long Rahway River and its 41-square mile watershed in Essex, Middlesex and Union Counties, New Jersey.

The Association owns no land or easements.



Rahway River

Contact Information

Jeffrey Jotz, President

Mailing Address

P.O. Box 1101
337 East Milton Avenue
Rahway, NJ 07065

Email Address

info@rahwayriver.org

Phone Number

908-892-7229

Website

www.rahwayriver.org

Rancocas Conservancy

Rancocas Conservancy is a non-profit organization founded in 1989 and incorporated in 1991. It has 1 part-time staff member and a dedicated volunteer base of about 50.

The mission of the Conservancy is to preserve, protect, and enhance the ecological and cultural integrity of the Rancocas Creek Watershed and its environs.

The organization's geographic focus is the Rancocas Creek Watershed, a 360-square mile area in Burlington, Camden, and Ocean counties, New Jersey.

Rancocas Conservancy either owns or manages 9 nature preserves, the largest of which is 198 acres. It also holds one conservation easement.



Members of the Conservancy participate in a spring clean up of an eighty-two-acre preserve.



Contact Information

Laura Bishop, President

Mailing Address

P.O. Box 2188
Vincentown, NJ 08088

Email Address

rcconservancy@yahoo.com

Phone Number

(609) 859-8860 x 17

Website

www.rancocasconservancy.org

Raritan Headwaters Association



The Raritan Headwaters Association (RHA) was created in 2011, when the South Branch Watershed Association and the Upper Raritan Watershed Association merged. Both groups had previously been active since 1959. RHA is currently made up of ten staff members and a large group of volunteers and supporters.

The mission of the Association is to protect and enhance the water resources of the Raritan River headwaters region by means of community participation, local leadership, and innovation, in order to improve the health of the human and natural environments.

The Association's geographic focus is the 470 square mile area that is the Raritan River headwaters region.

RHA manages ten preserves, including Fairview Farm, pictured left, which is their headquarters.



Contact Information

Cindy Ehrenclou, Executive Director

Mailing Address

P.O. Box 273
2121 Larger Cross Rd.,
Bedminster, NJ

Email Address

See website.

Phone Number

(908) 234-1852

Website

www.raritanheadwaters.org

Ridge and Valley Conservancy



The Ridge and Valley Conservancy (RVC) is a non-profit land trust formed in 1990 and has 4 staff members.

RVC's mission is to promote the public interest in conserving open space for aesthetic, recreational, cultural, ecological, agricultural, and development uses in harmony with the natural environment.

The Conservancy focuses its efforts on the Appalachian Ridge and Valley region of New Jersey, primarily working in Warren and Sussex Counties.

RVC owns 1,230 acres of property and holds 876 acres under conservation easements.

A member places signs on one of RVC's preserved properties.



Contact Information

Robert Canace, President

Mailing Address

P.O. Box 146
16 Main Street
Blairstown, NJ 07825

Email Address

info@ridgeandvalleyconservancy.org

Phone Number

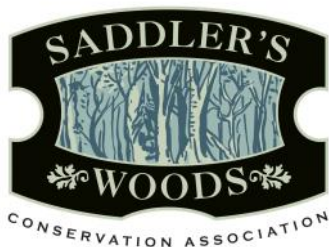
(908) 362-7989

Website

www.ridgeandvalleyconservancy.org

Saddler's Woods Conservation Association

Saddler's Woods Conservation Association (SWCA) is a non-profit organization, formed by Haddon Township residents who were active in the movement to save Saddler's Woods, a 25-acre urban forest, from a development threat. Since its preservation, SWCA volunteers have logged hundreds of hours restoring the woods and offering tours and educational programs. This forest is located in Haddon Township, NJ, within five miles of Philadelphia, PA, and includes old growth, young woodlands, meadow, and wetlands. It surrounds the headwater spring of the main branch of the Newton Creek, a tributary of the Delaware River.



Contact Information

Janet Goehner-Jacobs, Executive Director

Mailing Address

Saddler's Woods
Conservation Association
P.O. Box 189
Oaklyn, New Jersey 08107

Email Address

info@saddlerswoods.org

Phone Number

(856) 869-7372

Website

www.saddlerswoods.org

Save Barnegat Bay



Working to Preserve



Save Barnegat Bay (SBB) is a non-profit environmental group founded in 1971 as a local chapter of the Izaak Walton League of America.

Its mission is to conserve undeveloped natural land and clean water throughout the Barnegat Bay watershed. Save Barnegat Bay's efforts to protect natural land take two basic forms. The organization reviews development proposals on both the local and state level. The organization also uses Green Acres, foundation, and other funding to purchase environmentally sensitive land in order to convey it to public ownership as permanently protected natural open space, with appropriate public access.

Contact Information

Britta Wenzal, Executive Director

Mailing Address

117 Haines Road
Toms River, NJ 08753

Email Address

info@savebarnegatbay.org

Phone Number

(732) 830-3600

Website

www.savebarnegatbay.org

Save the Environment of Moorestown

Save the Environment of Moorestown (STEM) was founded in 1972.

Its mission is to preserve, protect and enhance the natural environment of Moorestown in Burlington County.

STEM's cooperative efforts with local, county and state bodies have led to the preservation of over 275 acres of land in Moorestown. STEM volunteers also help maintain open space in Moorestown.



Boundary Creek Natural Resource Area is a 36-acre open space, part of the Rancocas Greenway acquired by the Burlington County Division of Parks.

Contact Information

Kathy Huffman, President

Mailing Address

P.O. Box 704
Moorestown, NJ 08057

Email Address

See website below

Phone Number

(856) 722-9495

Website

www.stemonline.org

Schiff Natural Lands Trust



SCHIFF NATURAL LANDS TRUST

Education • Preservation • Stewardship

Schiff Natural Lands Trust (SNLT) was established in 1984 as a private, non-profit organization and has 5 paid staff and many members and volunteers.

The mission of SNLT is to acquire and preserve open space, serve as a model of environmental and educational stewardship, and improve the ecological value of natural areas using best management practices. It maintains an active nature center open to the public for environmental education, research and recreational activities consistent with the preservation of natural areas. Schiff Nature Center hosts hundreds of nature programs each year.

Schiff's geographic focus is Mendham Township and Mendham Borough in Morris County, New Jersey.

Schiff manages four preserves totaling 768 acres, including the 350-acre Schiff Nature Preserve (pictured right) and 50 acres in conservation easements.



Contact Information

Dorian Von Aulock, Executive Director

Mailing Address

339 Pleasant Valley Road
Mendham, NJ 07945

Email Address

dorian@schiffnaturepreserve.org

Phone Number

(973) 543-6004

Website

www.schiffnaturepreserve.org

Sourland Conservancy

The Sourland Conservancy is a not-for-profit organization founded in 1986. The Conservancy is dedicated to protecting the ecological integrity, historic resources, and special character of the Sourland Mountain Region. This goal is accomplished through education, advocacy, special initiatives, and involvement of residents. In keeping with its mission, the Conservancy aims to strengthen land use regulation, increase permanently preserved public open space, promote stewardship, and protect native species and combat invasives. The Conservancy does not own or manage any easements or preserves.



Contact Information

Caroline Katmann, Executive Director

Mailing Address

83 Princeton Ave Suite 1A
Hopewell, NJ 08525

Email Address

See website

Phone Number

(609) 309-5155

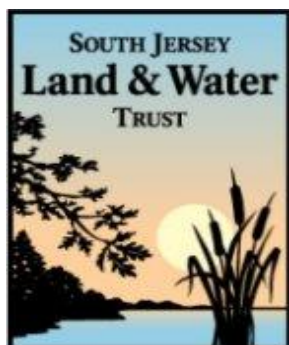
Website

www.sourland.org

South Jersey Land & Water Trust

South Jersey Land & Water Trust (SJLWT) is a non-profit organization founded in 1990 with 2 full-time staff people, two part-time consultants, and a dedicated base of volunteers and members. Its mission is to preserve and protect the water resources and land within the watersheds of southern New Jersey through public education, advocacy, increased scientific understanding, and habitat preservation. The Trust's main geographic focus is Camden, Gloucester and Salem Counties.

SJLWT owns approximately 40 acres and holds two farmland preservation easements. In addition, SJLWT is working on preserving a new State park and a fossil dig site in Gloucester County.



Volunteers gathered to help SJLWT clean up local streams.

Contact Information

Christine Nolan, Executive Director

Mailing Address

21 Main Street/Auburn-Pointers
Road
Swedesboro, NJ 08085

Email Address

contact@sjlandwater.org

Phone Number

(856) 881-2269

Website

www.sjlandwater.org

South Mountain Conservancy

South Mountain Conservancy is a volunteer, non-profit organization founded in 2000.

The mission of the Conservancy is to preserve, protect, and enhance Essex County's South Mountain Reservation, including its trails, infrastructure, ecology, and natural beauty. The Conservancy promotes ecologically sustainable use of the Reservation and environmental awareness through activities, educational programs, and regularly scheduled public service efforts by individuals, and corporate and community groups. It partners with the Essex County Park System in the management of the park and works with allied environmental organizations.

The geographic focus of the Conservancy is the South Mountain Reservation, located in Essex County, New Jersey.

The Reservation is comprised of 2,110 acres and is open for public recreation. The Conservancy does not hold conservation easements.



South Mountain Conservancy

The Conservancy's Trail Work Crew meets monthly to maintain existing trails or create new, sustainable trails.



Contact Information

Dennis Percher, Chairman

Mailing Address

P.O. Box 273
South Orange, NJ 07079

Email Address

info@somocon.org

Phone Number

844-SOMOCON

Website

www.somocon.org

SPARK Friends of Riverbank Park

Riverbank Park

"Where history lives"

SPARK Friends of Riverbank Park is a non-profit organization whose mission is the preservation of Riverbank Park in the Ironbound section of Newark. SPARK Friends runs a Cultural Arts Program and a Community Learning Program, which teaches civics, sciences and history using the park as a resource. SPARK Friends also sponsors community gardening projects and park clean ups.



An owlet
makes a home
in Riverbank
park.

Contact Information

Nancy Zak, Project Coordinator

Mailing Address

115 Clifton Ave,
Newark, NJ 07104

Email Address

See website below

Phone Number

(973) 268-3500

Website

www.riverbankpark.org

Stony Brook-Millstone Watershed Association

Stony Brook-Millstone Watershed Association (SBMWA) is a non-profit organization founded in 1949; it has 23 staff.

The Association's mission is to enhance the quality of the natural environment of the Stony Brook-Millstone watershed through intelligent and informed land use decision making, the protection of water quality and supply, and the improvement of the community's awareness of environmental issues.

SBMWA's geographic focus is the 265-square mile region in central New Jersey drained by Stony Brook and the Millstone River. The area includes 26 municipalities.

The organization owns an 860-acre nature reserve, which includes 14 miles of hiking trails and an active environmental education center.



Volunteers carry a coconut fiber log used to stabilize the edge of a stream bank.



Contact Information

Jim Waltman, Executive Director

Mailing Address

31 Titus Mill Road
Pennington, NJ 08534

Email Address

sbmwa@thewatershed.org

Phone Number

(609) 737-3735

Website

www.thewatershed.org

Teaneck Creek Conservancy

Teaneck Creek Conservancy (TCC) is a non-profit organization organized in 2001.

TCC's mission is to reclaim and protect the environmental, cultural, and historical legacy of the Teaneck Creek watershed.

Its geographic focus is the Teaneck Creek watershed and surrounding area, located primarily in Bergen County, New Jersey.

Although TCC does not own Teaneck Creek Park, the Conservancy, with Bergen County, Green Acres, and the Puffin Foundation, saved the 46-acre Park and established trails and programs for the public.



Visitors to the Conservancy take part in a nature photography session.

Contact Information

Alexa Marques, Executive Director

Mailing Address

20 Puffin Way
Teaneck, NJ 07666

Email Address

info@teaneckcreek.org

Phone Number

(201) 836-2403

Website

www.teaneckcreek.org

Tewksbury Land Trust



TEWKSBURY LAND TRUST

P.O. Box 490 • Oldwick • New Jersey 08858

Tewksbury Land Trust is a non-profit organization founded in 1993. It has over 250 active contributors and volunteers.

The mission of the Trust is to preserve open space and farmland in Tewksbury Township, in Hunterdon County, NJ. This is accomplished through bequests, the use of conservation easements, and the acquisition open land. The Trust, in partnership with the citizens of Tewksbury Township, other local land trusts, and governments, helps preserve the Township as a rural community for future generations.



Christie Hoffman Farm Park
in Tewksbury

Contact Information

Laurence Ross, President

Mailing Address

P.O. Box 490
Oldwick, NJ 08858

Email Address

tewksburylandtrust@gmail.com

Phone Number

(908) 439-3796

Website

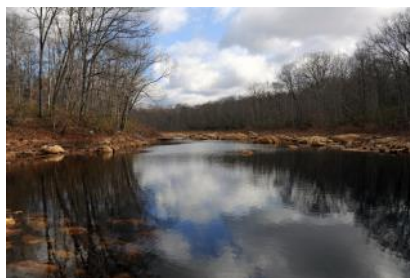
<http://tewksburylandtrust.org>

The Land Conservancy of NJ

Originally founded as the Morris County Parks and Conservation Foundation in 1981, the organization is a non-profit organization with 15 paid staff and over 1,400 members.

The mission of the Conservancy is to preserve land and water resources, conserve open space, and inspire and empower individuals and communities to protect natural land and the environment. The Conservancy works with local governments to implement land preservation programs.

The organization's geographic focus is the state of New Jersey. TLC-NJ owns approximately 230 acres in fee and 2 conservation easements totaling 197 acres.



Contact Information

David Epstein, President

Mailing Address

19 Boonton Avenue
Boonton, NJ 07005

Email Address

info@tlc-nj.org

Phone Number

(973) 541-1010

Website

<http://tlc-nj.org/>

The Nature Conservancy (New Jersey Office)

The Nature Conservancy is the leading conservation organization around the world to protect ecologically important lands and waters for nature and people. Founded in 1951, The Conservancy operates in all 50 states and over 30 countries. To date The Conservancy has protected more than 120 million acres of land and 5,000 miles of rivers worldwide.

The New Jersey Chapter has been preserving land across the state since receiving its charter in 1988. The Chapter has helped to protect over 55,000 acres of important habitat, owns and manages preserves across New Jersey, and has more than 45,000 supporters in New Jersey alone. The New Jersey Chapter works to abate threats to natural lands and waters through: acquisition and restoration, scientific research, outreach and advocacy.

The Nature
Conservancy



Protecting nature. Preserving life.™



The Conservancy's Minisink Valley Preserve,
located in the Kittatinny Ridge.

Contact Information

Dr. Barbara Brummer, NJ State Director

Mailing Address

200 Pottersville Road
Chester, NJ 07930

Email Address

newjersey@tnc.org

Phone Number

(908) 879-7262

Website

www.nature.org/newjersey

Trust for Public Land (New Jersey Office)

The Trust for Public Land (TPL) is a national non-profit organization founded in 1972.

TPL conserves land for people to enjoy as parks, gardens, and other natural places, ensuring livable communities for generations to come.

In New Jersey, TPL supports local community priorities for land conservation—from inner-city park development to conservation of farms, forests, estuaries and watershed lands.

TPL has offices in Morristown, Newark and Southampton Township, Burlington County.

Through its “Parks for People—Newark” program, TPL has designed and built ten parks and playgrounds throughout the city and has helped establish the first park on the Passaic waterfront in Newark.



THE
TRUST
FOR
PUBLIC
LAND

Contact Information

Anthony Cucchi, New Jersey Field Office Director

Mailing Address

20 Community Place
Suite 7
Morristown, NJ 07960

Email Address

newjersey@tpl.org

Phone Number

(973) 292-1100

Website

www.tpl.org/newjersey

Unexpected Wildlife Refuge



Unexpected Wildlife Refuge (UWR) is a non-profit organization supported by private donations and managed by a Board of Directors.

Its mission is to provide an inviolate sanctuary for animals and plants indigenous to NJ Pinelands habitat; provide a living classroom for the public and promote environmental education.

UWR manages a refuge that began with an initial acquisition of 85 acres and has grown to 767 acres of swamps, bogs, forests and lakes. The refuge is in Buena Vista Township in the Pinelands of New Jersey.



Sign at entrance to the refuge

Contact Information

Veronica Van Hof , Director

Mailing Address

P.O. Box 765
Newfield, NJ 08344

Email Address

director@unexpectedwildliferefuge.org

Phone Number

(856) 697-3541

Website

www.unexpectedwildliferefuge.org

Verona Park Conservancy

Verona Park Conservancy (VPC) is a volunteer, member-based non-profit organization founded in 1995.

The mission of VPC is to work with the Essex County Parks Department and the public to maintain, beautify and improve Verona Park's appearance and facilities for the enjoyment of present and future generations.

The Conservancy's geographic focus is the 54-acre Verona Park, located in the town of Verona in Essex County, New Jersey.

The Conservancy co-manages the Park with the Essex County Parks Department.



The Conservancy regularly patrols the park's pond looking for litter, ranging from bottles to baseballs.

Contact Information

James McGregor , President

Mailing Address

P.O. Box 143
Verona, NJ 07044

Email Address

VeronaParkConservancy@gmail.com

Phone Number

none

Website

www.veronapark.org

Washington Township Land Trust

Formed in 1990, the Washington Township Land Trust is a non-profit group with a mission to protect and preserve the lands, watercourses, ponds, streams, and structures which contribute to the natural beauty and rural character of Washington Township.

In order to achieve this, the Trust acquires interests in land through purchase or donation, manages land uses for the benefit of the public, and makes itself available to the Township of Washington to assist in the stewardship of public lands and easements.

The geographic focus of the Trust is Washington Township in Morris County, New Jersey.

The Trust owns, co-owns, or manages nearly 400 acres of land and has helped preserve over 1,000 acres. It also owns and is restoring a 1750 grist and saw mill open for public tours.



Owned by the Washington Township Land Trust, Wiltowns is a historic grist and saw mill, built circa 1750.



Contact Information

Jim Fitterer, President

Mailing Address

P.O. Box 4
Long Valley, NJ 07853

Email Address

wtlandtrust@gmail.com

Phone Number

(908) 876-5986

Website

www.wtlt.org

Watsessing Park Conservancy

Watsessing Park Conservancy (WPC) is a volunteer non-profit organization founded in 2004 as an offshoot of the Watsessing Heights Neighborhood Association.

The mission of WPC is to partner with Essex County in the preservation, maintenance and improvement of Watsessing Park and its structures, perpetuate the legacy of Frederick Law Olmsted, and preserve the character and historical integrity of the park and its environs.

The geographic focus of the Conservancy is the 69-acre Watsessing Park, located in the Townships of Bloomfield and East Orange in eastern Essex County, New Jersey.

The organization does not own the park, but co-manages it with the Essex County Parks Department.

Among many jobs to be done are cleaning the park and planting a colorful garden in the shape of a "W".



Contact Information

Thess Prince, President

Mailing Address

Bloomfield Avenue and Conger
Street
Bloomfield, NJ 07003

Email Address

watsessingpark@gmail.com

Phone Number

(973) 429-1102

Website

www.friendsofwatsessing.org

Weequahic Park Association

Weequahic Park Association (WPA) is a non-profit group formed in 1992; it has 6 paid staff. The WPA is among the oldest and most successful community based park support and advocacy organizations in the United States. The WPA enjoys recognition from the County of Essex as its long-term partner and private non-profit.

The mission of WPA is to redevelop, restore and conserve Weequahic Park, 311 acres located in the city of Newark in eastern Essex County, New Jersey and an area of great historical significance.

Designed by the Olmsted Brothers firm, Weequahic Park has the largest lake in Essex County. The organization does not own the park, but co-manages it with the Essex County Parks Department.



The Weequahic Park Association and Essex County Parks Department organizes community events such as fishing derbies.

Contact Information

Joseph White, Executive Director

Mailing Address

P.O. Box 2248
Newark, NJ 07114

Email Address

wpapark@gmail.com

Phone Number

(973) 643-7850

Website

<https://www.facebook.com/weequahicpark.org/>

West Essex Park Conservancy



West Essex Park Conservancy (WEPC) is a non-profit organization administered by a board of directors and supported through memberships, donations and volunteers.

The mission of WEPC is to preserve the quality of life and the resources of nature in Essex County.



Passaic River egrets

Contact Information

Ron Pate, President

Mailing Address

115 Clifton Avenue
Newark, NJ 07104

Email Address

president@westessexparkconservancy.org

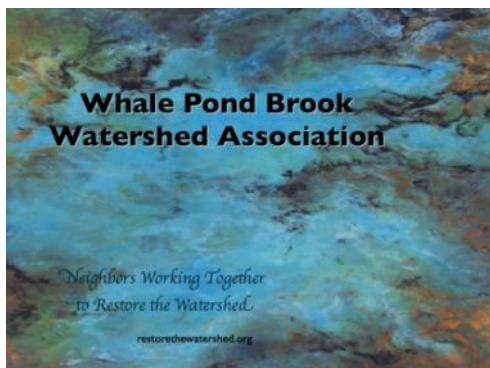
Phone Number

(973) 268-3500

Website

www.westessexparkconservancy.org

Whale Pond Brook Watershed Association



The Whale Pond Brook Watershed Association restores the eroded banks and degraded water quality within the Whale Pond Brook Watershed. The Association has a vision to create a greenway with a walking trail from the pond (source) to the

ocean. The Association is entirely comprised of volunteers from towns in the area of the watershed. They meet for clean ups, hikes, demonstrations, information sessions, and various other events that are open to the public.



Contact Information

Faith Teitelbaum, Executive Director

Mailing Address

9 Marshall Court
Long Branch, NJ 07740

Email Address

faithteitel@gmail.com

Phone Number

(732) 513-5445

Website

www.restorethewatershed.org

Whitesbog Preservation Trust



Whitesbog Preservation Trust is a non-profit organization founded in 1982 with 3 staff members and many committed volunteers.

The mission of the Trust is to restore, protect and enhance the land, sites and buildings at Whitesbog and to provide educational and interpretive programs and materials about history, culture and natural environment of Whitesbog.

The geographic focus of the Trust is the historic Whitesbog Village in Brendan T. Byrne State Forest, Pemberton Township of Burlington County, New Jersey.

The organization leases Whitesbog from the State of New Jersey for management and restoration; it does not technically own land, nor hold conservation easements.

Trust volunteers staff the general store in Whitesbog Village, the starting point for tours and a great place to buy local goods.



Contact Information

Susan Phillips, Executive Director

Mailing Address

120-34 Whitesbog Road
Brown Mills, NJ 08015

Email Address

whitesbogpreservationtrust@gmail.com

Phone Number

(609) 893-4646

Website

www.whitesbog.org

Help keep the directory current!

To add organizations or make
changes to existing entries, please
contact Laura@njconservation.org.

Thank You!



New Jersey Conservation
F O U N D A T I O N

Compiled by
New Jersey Conservation Foundation
Bamboo Brook
170 Longview Road
Far Hill, NJ 07931
info@njconservation.org
www.njconservation.org
Phone: 908-234-1225
Fax: 908-234-1189